

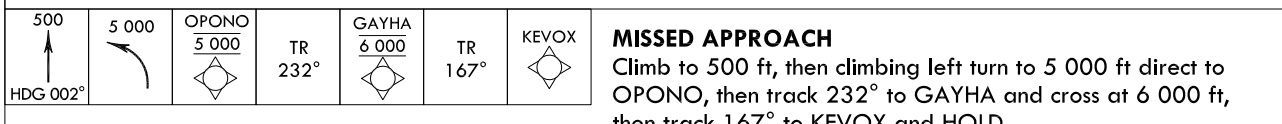
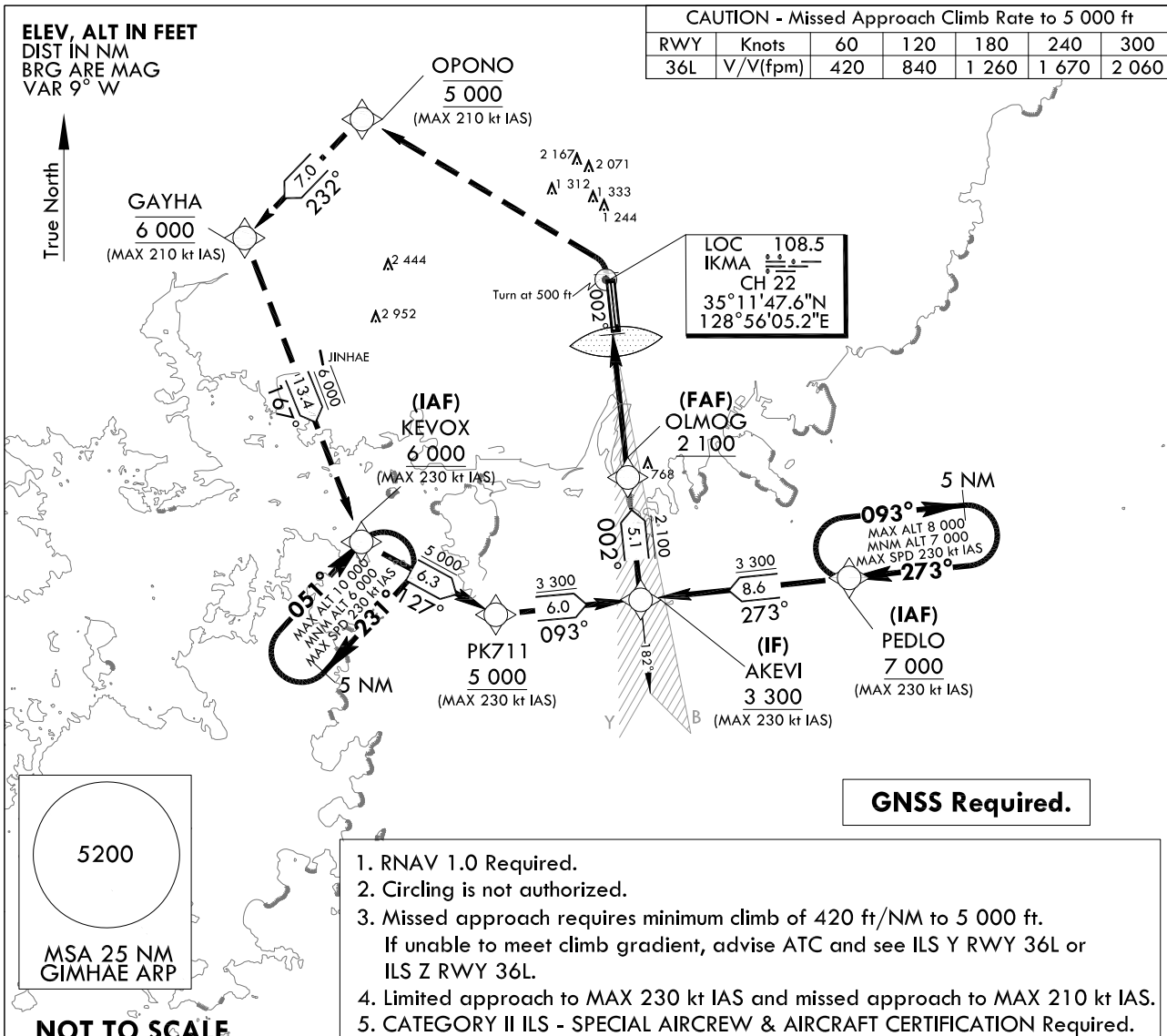
**INSTRUMENT
APPROACH
CHART**

AERODROME ELEV 13 ft
HEIGHTS RELATED TO
RWY 36L ELEV TDZ 13 ft

GIMHAE APP	125.5	364.0
GIMHAE TWR	118.1	118.45
	233.3	236.6

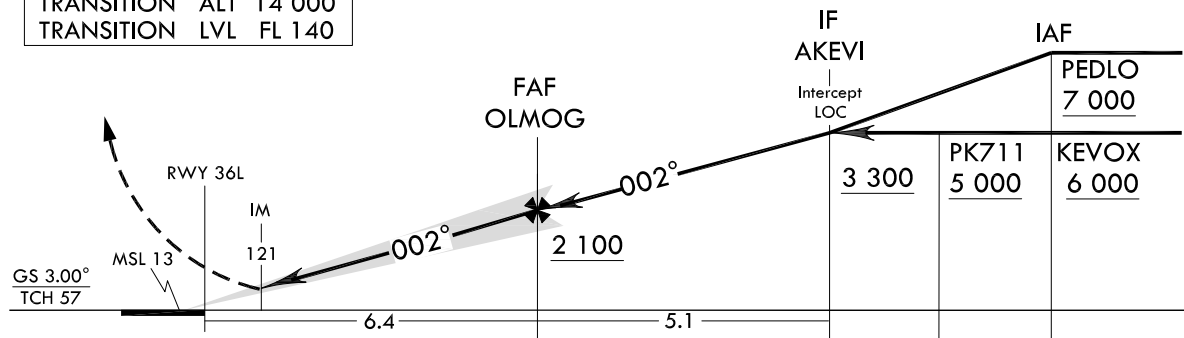
BUSAN/Gimhae Intl(RKPK)
ILS RWY 36L
CAT II

Note : Approach and circle to land under U.S. TERPS.



NOTE : VGSI and ILS glidepath not coincident (VGSI Angle 3.00° TCH 67).

TRANSITION ALT 14 000
TRANSITION LVL FL 140



CATEGORY	A	B	C	D
S-ILS 36L		RA* 102/12	100 DA 113	

* Radio Altimeter Height

Change : Information of glide slope.

BUSAN/Gimhae INTL(RKPK)
ILS RWY 36L
CAT II

AERONAUTICAL DATA TABULATION

Instrument Approach Procedure Coding Tables

ILS RWY 36L CAT II - via PEDLO to AKEVI(IF)

Serial Number	Path Descriptor	Waypoint Identifier	Fly-over	Course/Track °M(T)	Distance (NM)	Turn direction	Altitude (ft)	Speed (kt)	Coordinates	VPA/TCH	Navigation specification	Remarks
001	-	PEDLO	-	-	-	-	+7 000	-230	34°59'23.1"N 129°08'15.3"E	-	RNAV 1	IAF
002	TF	AKEVI	-	272.59(264.07)	8.6	-	+3 300	-230	34°58'29.0"N 128°57'48.0"E	-	RNAV 1	IF

ILS RWY 36L CAT II - via KEYOX to AKEVI(IF)

Serial Number	Path Descriptor	Waypoint Identifier	Fly-over	Course/Track °M(T)	Distance (NM)	Turn direction	Altitude (ft)	Speed (kt)	Coordinates	VPA/TCH	Navigation specification	Remarks
001	-	KEYOX	-	-	-	-	+6 000	-230	35°00'51.7"N 128°43'47.2"E	-	RNAV 1	IAF
002	TF	PK711	-	126.82(118.30)	6.3	-	+5 000	-230	34°57'51.9"N 128°50'32.3"E	-	RNAV 1	SDF
003	TF	AKEVI	-	092.58(084.06)	6.0	-	+3 300	-230	34°58'29.0"N 128°57'48.0"E	-	RNAV 1	IF

ILS RWY 36L CAT II - via AKEVI(IF) to MAHF

Serial Number	Path Descriptor	Waypoint Identifier	Fly-over	Course/Track °M(T)	Distance (NM)	Turn direction	Altitude (ft)	Speed (kt)	Coordinates	VPA/TCH	Navigation specification	Remarks
001	TF	AKEVI	-	-	-	-	+3 300	-230	34°58'29.0"N 128°57'48.0"E	-	RNAV 1	IF
002	TF	OLMOG	-	002.49(353.97)	5.1	-	+2 100	-	35°03'32.1"N 128°57'09.1"E	-	-	FAF
003	-	DA	-	002.49(353.97)	-	-	+113	-	-	-	LOC	DA
004	-	RWY 36L	-	002.49(353.97)	-	-	-	-	35°09'54.7"N 128°56'19.8"E	3.0/57	LOC	-
005	VA	-	-	002.49(353.97)	-	-	+500	-210	-	-	RNAV 1	CG 420 ft/NM to 5 000 ft
006	DF	OPONO	-	-	-	L	@5 000	-210	35°18'24.2"N 128°43'46.2"E	-	RNAV 1	-
007	TF	GAYHA	-	232.27(223.75)	7.0	-	@6 000	-210	35°13'22.4"N 128°37'54.4"E	-	RNAV 1	-
008	TF	KEYOX	-	167.38(158.86)	13.4	-	+6 000	-230	35°00'51.7"N 128°43'47.2"E	-	RNAV 1	-

HOLDING PROCEDURE

Holding Identification	Path Descriptor	Waypoint Identifier	Fly-over	Course/Track °M(T)	Distance (NM)	Turn direction	Altitude (ft)	Speed (kt)	Coordinates	VPA/TCH	Navigation specification	Remarks
ILS RWY 36L CAT II	HM	PEDLO	-	272.59(264.07)	5.0	R	-8 000 +7 000	-230	34°59'23.1"N 129°08'15.3"E	-	RNAV 1	Hold at PEDLO E Right Turn 273° Inbound 5 NM Leg.
	HM	KEYOX	-	051.05(042.53)	5.0	R	-10 000 +6 000	-230	35°00'51.7"N 128°43'47.2"E	-	RNAV 1	Hold at KEYOX SW Right Turn 051° Inbound 5 NM Leg.

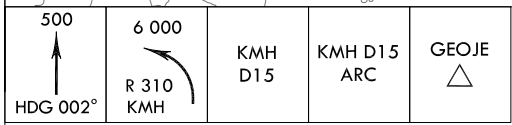
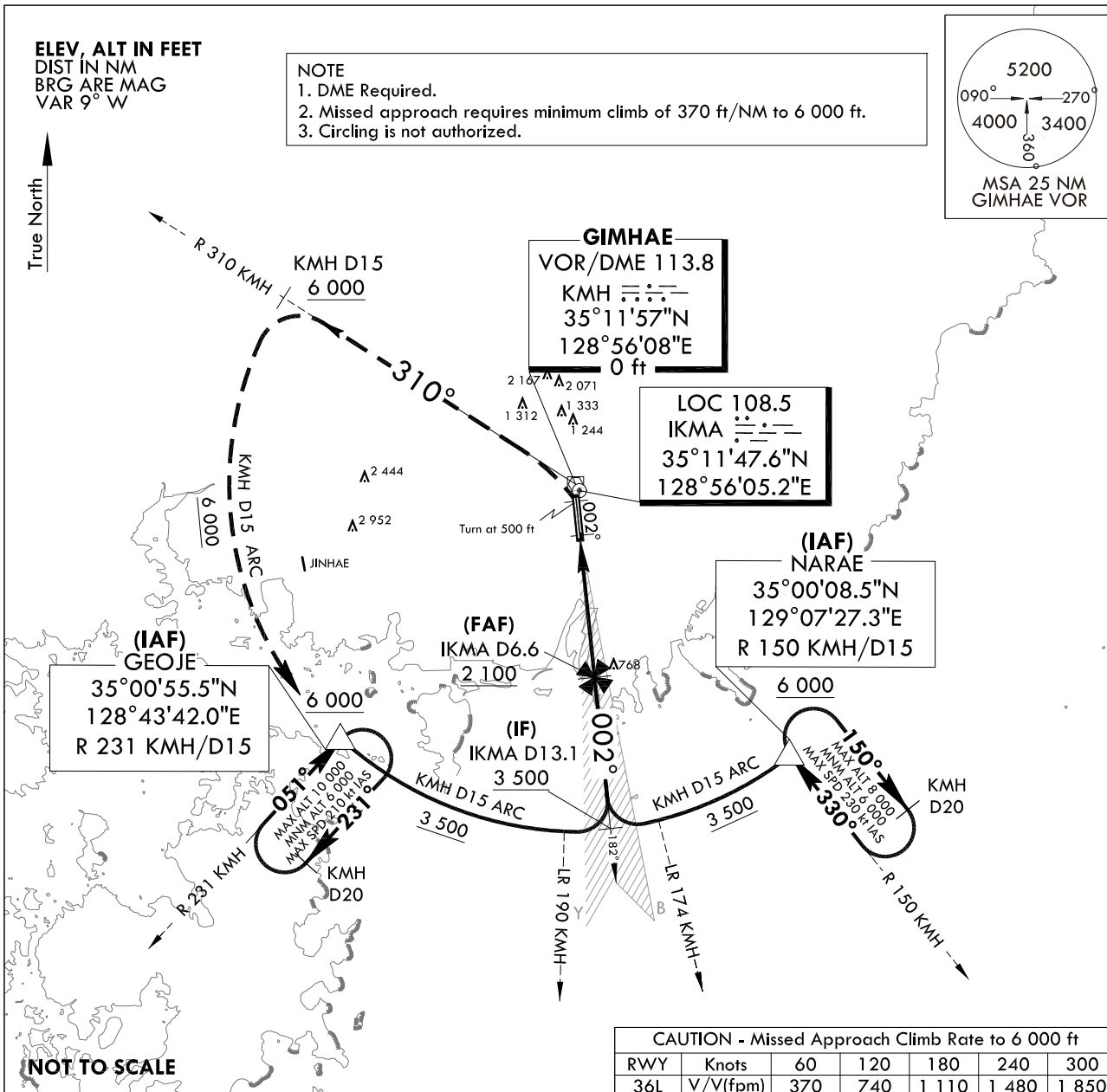
INSTRUMENT APPROACH CHART

AERODROME ELEV 13 ft
HEIGHTS RELATED TO RWY 36L ELEV TDZ 13 ft

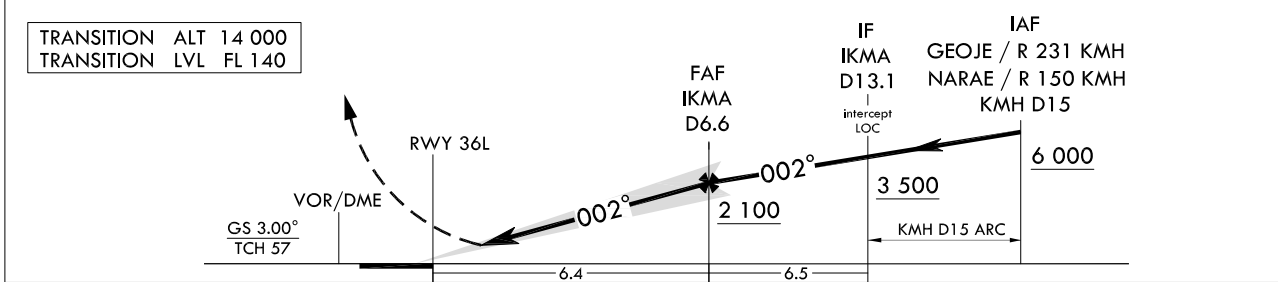
GIMHAE APP 125.5 364.0
GIMHAE TWR 118.1 118.45
233.3 236.6

BUSAN/Gimhae Intl(RKPK)
ILS Y RWY 36L

Note : Approach and circle to land under U.S. TERPS.



NOTE : Use IKMA DME when on the localizer course.
NOTE : VGSI and ILS glidepath not coincident (VGSI Angle 3.00° TCH 67).



CATEGORY	A	B	C	D
S-ILS 36L	213/18 200 (200 - 1/2)		213/24* 200(200-1/2) (*Use civil only RVR 18)	
	When TDZ/CL LGT INOP, increase RVR to 24			
ALS INOP	213/40 200(200 - 3/4)			

Change : Information of glide slope.

INTENTIONALLY

LEFT

BLANK

INSTRUMENT APPROACH CHART

AERODROME ELEV 13 ft
HEIGHTS RELATED TO
THR RWY 36L - ELEV 12 ft

GIMHAE APP 125.5 364.0
GIMHAE TWR 118.1 118.45
233.3 236.6

**BUSAN/Gimhae Intl(RKPK)
LOC Y RWY 36L**

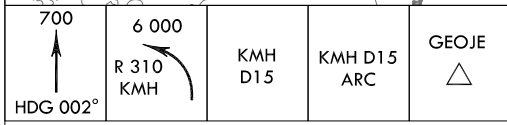
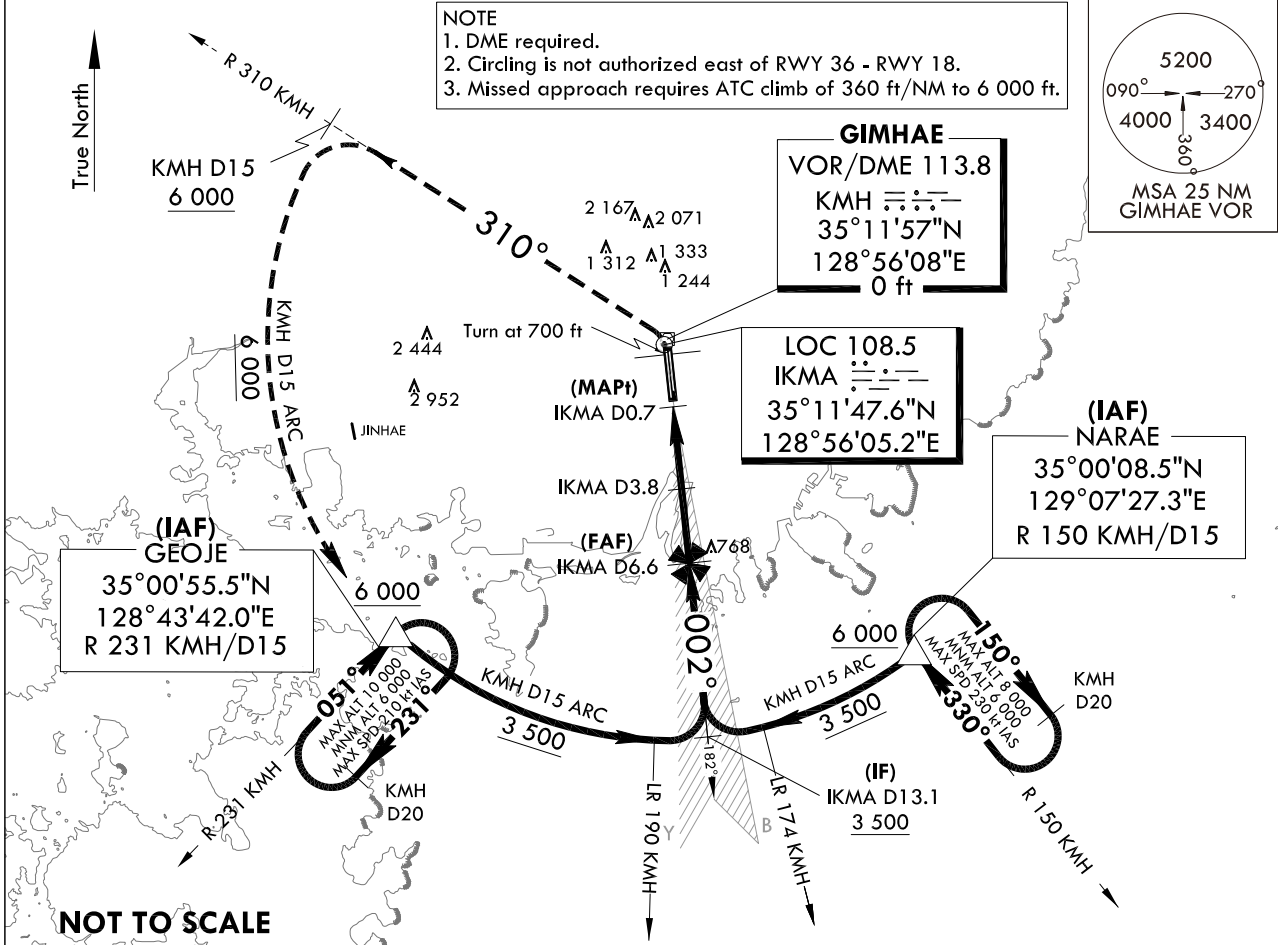
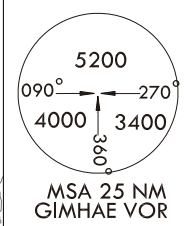
Note : Approach and circle to land under U.S. TERPS.

ELEV, ALT IN FEET
DIST IN NM
BRG ARE MAG
VAR 9° W

CAUTION - Missed Approach Climb Rate to 6 000 ft

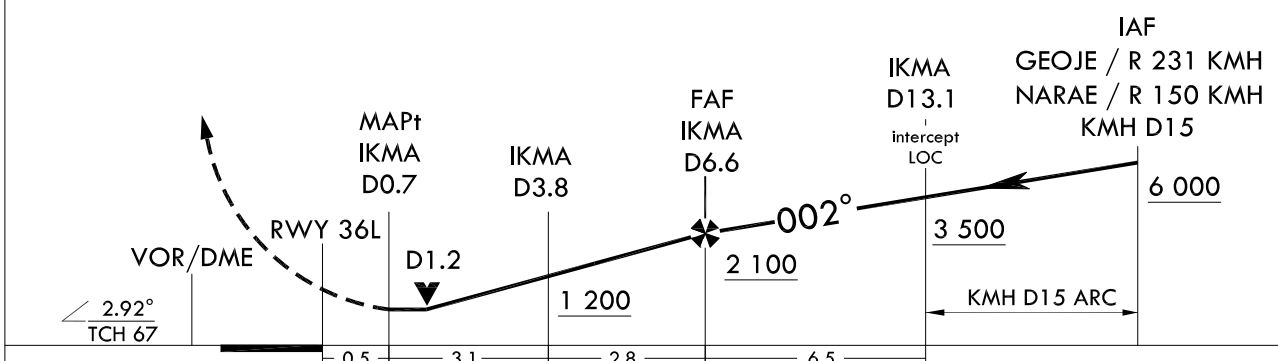
RWY	Knots	60	120	180	240	300
36L	V/V(fpm)	360	720	1 080	1 440	1 800

NOTE
1. DME required.
2. Circling is not authorized east of RWY 36 - RWY 18.
3. Missed approach requires ATC climb of 360 ft/NM to 6 000 ft.



MISSSED APPROACH
Climb to 700 ft, then left turn climbing 6 000 ft on R 310 KMH to 15 DME, then arc KMH D15 to GEOJE and hold.
NOTE : Use IKMA DME when on the localizer course.

TRANSITION	ALT	14 000
TRANSITION	LVL	FL 140



CATEGORY	A	B	C	D
S-LOC 36L	400/24 388(400 - 1/2)		400/35 388(400 - 5/8)	
ALS INOP	400/55 388(400 - 1)		400/60 388(400 - 1 1/8)	
CIRCLING	520-1 507(600 - 1)	580-1 567(600 - 1)	1 360 - 3 1 347(1 400 - 3)	1 700 - 3 1 687(1 700 - 3)

Change : Withdrawal of symbol for glide slope.

INTENTIONALLY

LEFT

BLANK

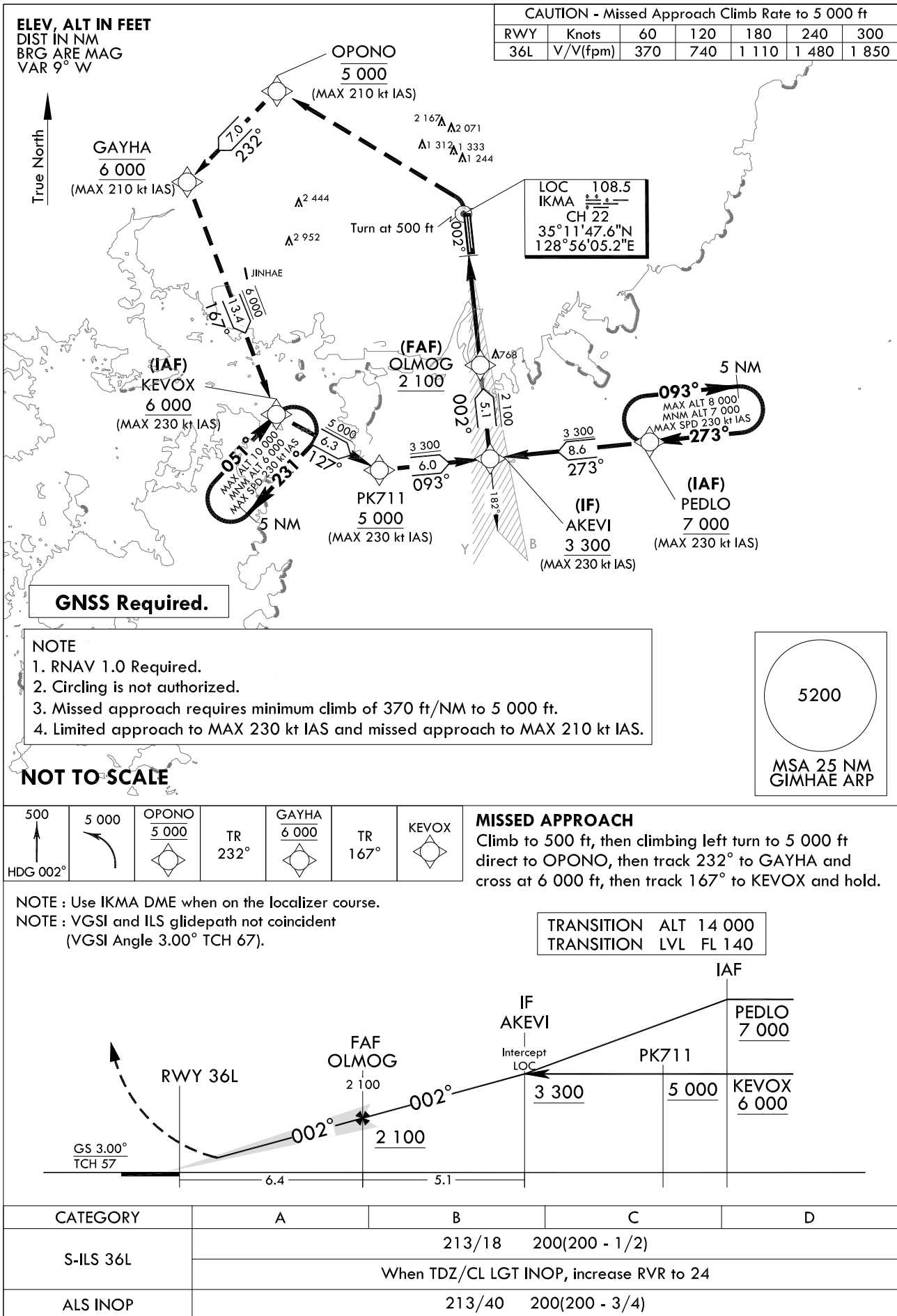
**INSTRUMENT
APPROACH
CHART**

**AERODROME ELEV 13 ft
HEIGHTS RELATED TO
RWY 36L ELEV TDZ 13 ft**

GIMHAE APP 125.5 364.0
GIMHAE TWR 118.1 118.45
233.3 236.6

**BUSAN/Gimhae Intl(RKPK)
ILS Z RWY 36L**

Note : Approach and circle to land under U.S. TERPS.



Change : Information of glide slope.

AERONAUTICAL DATA TABULATION

Instrument Approach Procedure Coding Tables

ILS Z RWY 36L - via PEDLO to AKEVI(IF)

Serial Number	Path Descriptor	Waypoint Identifier	Fly-over	Course/Track °M(°T)	Distance (NM)	Turn direction	Altitude (ft)	Speed (kt)	Coordinates	VPA/TCH	Navigation specification	Remarks
001	-	PEDLO	-	-	-	-	+7 000	-230	34°59'23.1"N 129°08'15.3"E	-	RNAV 1	IAF
002	TF	AKEVI	-	272.59(264.07)	8.6	-	+3 300	-230	34°58'29.0"N 128°57'48.0"E	-	RNAV 1	IF

ILS Z RWY 36L - via KEVOX to AKEVI(IF)

Serial Number	Path Descriptor	Waypoint Identifier	Fly-over	Course/Track °M(°T)	Distance (NM)	Turn direction	Altitude (ft)	Speed (kt)	Coordinates	VPA/TCH	Navigation specification	Remarks
001	-	KEVOX	-	-	-	-	+6 000	-230	35°00'51.7"N 128°43'47.2"E	-	RNAV 1	IAF
002	TF	PK711	-	126.82(118.30)	6.3	-	+5 000	-230	34°57'51.9"N 128°50'32.3"E	-	RNAV 1	SDF
003	TF	AKEVI	-	092.58(084.06)	6.0	-	+3 300	-230	34°58'29.0"N 128°57'48.0"E	-	RNAV 1	IF

ILS Z RWY 36L - via AKEVI(IF) to MAHF

Serial Number	Path Descriptor	Waypoint Identifier	Fly-over	Course/Track °M(°T)	Distance (NM)	Turn direction	Altitude (ft)	Speed (kt)	Coordinates	VPA/TCH	Navigation specification	Remarks
001	TF	AKEVI	-	-	-	-	+3 300	-230	34°58'29.0"N 128°57'48.0"E	-	RNAV 1	IF
002	TF	OLMOG	-	002.49(353.97)	5.1	-	+2 100	-	35°03'32.1"N 128°57'09.1"E	-	-	FAF
003	-	DA	-	002.49(353.97)	-	-	-	-	-	-	LOC	DA
004	-	RWY 36L	-	002.49(353.97)	-	-	-	-	35°09'54.7"N 128°56'19.8"E	3.0/57	LOC	-
005	VA	-	-	002.49(353.97)	-	-	+500	-210	-	-	RNAV 1	CG 370 ft/NM to 5 000 ft
006	DF	OPONO	-	-	-	L	@5 000	-210	35°18'24.2"N 128°43'46.2"E	-	RNAV 1	-
007	TF	GAYHA	-	232.27(223.75)	7.0	-	@6 000	-210	35°13'22.4"N 128°37'54.4"E	-	RNAV 1	-
008	TF	KEVOX	-	167.38(158.86)	13.4	-	+6 000	-230	35°00'51.7"N 128°43'47.2"E	-	RNAV 1	-

HOLDING PROCEDURE

Holding Identification	Path Descriptor	Waypoint Identifier	Fly-over	Course/Track °M(°T)	Distance (NM)	Turn direction	Altitude (ft)	Speed (kt)	Coordinates	VPA/TCH	Navigation specification	Remarks
ILS Z RWY 36L	HM	PEDLO	-	272.59(264.07)	5.0	R	-8 000 +7 000	-230	34°59'23.1"N 129°08'15.3"E	-	RNAV 1	Hold at PEDLO E Right Turn 273° Inbound 5 NM Leg.
	HM	KEVOX	-	051.05(042.53)	5.0	R	-10 000 +6 000	-230	35°00'51.7"N 128°43'47.2"E	-	RNAV 1	Hold at KEVOX SW Right Turn 051° Inbound 5 NM Leg.

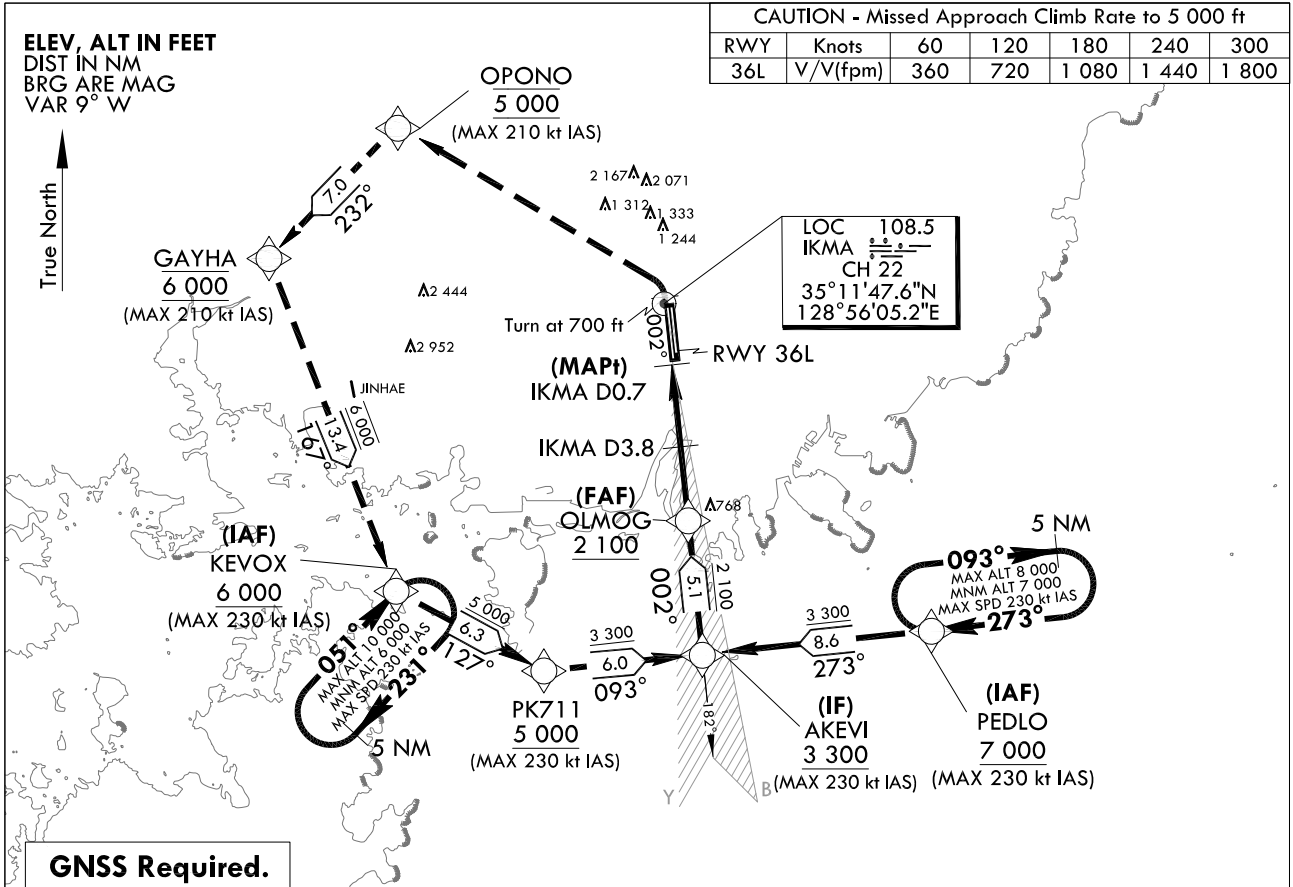
**INSTRUMENT
APPROACH
CHART**

AERODROME ELEV 13 ft
HEIGHTS RELATED TO
THR RWY 36L - ELEV 12 ft

GIMHAE APP 125.5 364.0
GIMHAE TWR 118.1 118.45
233.3 236.6

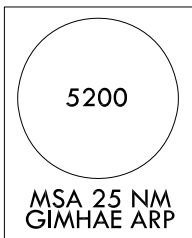
BUSAN/Gimhae Intl(RKPK)
LOC Z RWY 36L

Note : Approach and circle to land under U.S. TERPS.



GNSS Required.

NOTE
1. RNAV 1.0 Required.
2. DME Required.
3. Circling is not authorized east of RWY 36 - RWY 18.
4. Missed approach requires ATC climb of 360 ft/NM to 5 000 ft.
5. Limited approach to MAX 230 kt IAS and missed approach to MAX 210 kt IAS.



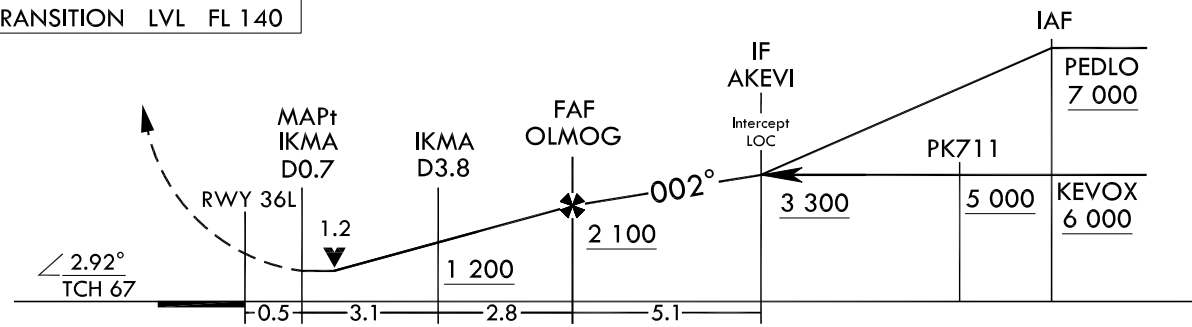
NOT TO SCALE



MISSED APPROACH
Climb to 700 ft then climbing left turn to 5 000 ft direct to Opono, then track 232° to GAYHA and cross at 6 000 ft, then track 167° to KEVOX and hold.

NOTE : Use IKMA DME when on the localizer course.

TRANSITION ALT 14 000
TRANSITION LVL FL 140



CATEGORY	A	B	C	D
S-LOC 36L	400/24 388(400 - 1/2)		400/35 388(400 - 5/8)	
ALS INOP	400/55 388(400 - 1)		400/60 388(400 - 1 1/8)	
CIRCLING	520-1 507(600 - 1)	580-1 567(600 - 1)	1 360 - 3 1 347(1 400 - 3)	1 700 - 3 1 687(1 700 - 3)

Change : Withdrawal of symbol for glide slope.

BUSAN/Gimhae Intl(RKPK)
LOC Z RWY 36L

AERONAUTICAL DATA TABULATION

Instrument Approach Procedure Coding Tables

LOC Z RWY 36L - via PEDLO to AKEVI(IF)

Serial Number	Path Descriptor	Waypoint Identifier	Fly-over	Course/Track °M(°T)	Distance (NM)	Turn direction	Altitude (ft)	Speed (kt)	Coordinates	VPA/TCH	Navigation specification	Remarks
001	-	PEDLO	-	-	-	-	+7 000	-230	34°59'23.1"N 129°08'15.3"E	-	RNAV 1	IAF
002	TF	AKEVI	-	272.59(264.07)	8.6	-	+3 300	-230	34°58'29.0"N 128°57'48.0"E	-	RNAV 1	IF

LOC Z RWY 36L - via KEVOX to AKEVI(IF)

Serial Number	Path Descriptor	Waypoint Identifier	Fly-over	Course/Track °M(°T)	Distance (NM)	Turn direction	Altitude (ft)	Speed (kt)	Coordinates	VPA/TCH	Navigation specification	Remarks
001	-	KEVOX	-	-	-	-	+6 000	-230	35°00'51.7"N 128°43'47.2"E	-	RNAV 1	IAF
002	TF	PK711	-	126.82(118.30)	6.3	-	+5 000	-230	34°57'51.9"N 128°50'32.3"E	-	RNAV 1	SDF
003	TF	AKEVI	-	092.58(084.06)	6.0	-	+3 300	-230	34°58'29.0"N 128°57'48.0"E	-	RNAV 1	IF

LOC Z RWY 36L - via AKEVI(IF) to MAHF

Serial Number	Path Descriptor	Waypoint Identifier	Fly-over	Course/Track °M(°T)	Distance (NM)	Turn direction	Altitude (ft)	Speed (kt)	Coordinates	VPA/TCH	Navigation specification	Remarks
001	TF	AKEVI	-	-	-	-	+3 300	-230	34°58'29.0"N 128°57'48.0"E	-	RNAV 1	IF
002	TF	OLMOG	-	002.49(353.97)	5.1	-	+2 100	-	35°03'32.1"N 128°57'09.1"E	-	LOC	FAF
003	-	IKMA D3.8	-	002.49(353.97)	2.8	-	+1 200	-	-	-	LOC	SDF
004	-	IKMA D0.7	-	002.49(353.97)	3.1	-	+400	-	-	-	LOC	MAPt
005	-	RWY 36L	-	002.49(353.97)	0.5	-	-	-	35°09'54.7"N 128°56'19.8"E	3.0/67	LOC	-
006	VA	-	-	002.49(353.97)	-	-	+700	-210	-	-	RNAV 1	CG 360 ft/NM to 5 000 ft
007	DF	OPONO	-	-	-	L	@5 000	-210	35°18'24.2"N 128°43'46.2"E	-	RNAV 1	CG 360 ft/NM to 5 000 ft
008	TF	GAYHA	-	232.27(223.75)	7.0	-	@6 000	-210	35°13'22.4"N 128°37'54.4"E	-	RNAV 1	-
009	TF	KEVOX	-	167.38(158.86)	13.4	-	+6 000	-230	35°00'51.7"N 128°43'47.2"E	-	RNAV 1	-

HOLDING PROCEDURE

Holding Identification	Path Descriptor	Waypoint Identifier	Fly-over	Course/Track °M(°T)	Distance (NM)	Turn direction	Altitude (ft)	Speed (kt)	Coordinates	VPA/TCH	Navigation specification	Remarks
LOC Z RWY 36L	HM	PEDLO	-	272.59(264.07)	5.0	R	-8 000 +7 000	-230	34°59'23.1"N 129°08'15.3"E	-	RNAV 1	Hold at PEDLO E Right Turn 273° Inbound 5 NM Leg.
	HM	KEVOX	-	051.05(042.53)	5.0	R	-10 000 +6 000	-230	35°00'51.7"N 128°43'47.2"E	-	RNAV 1	Hold at KEVOX SW Right Turn 051° Inbound 5 NM Leg.

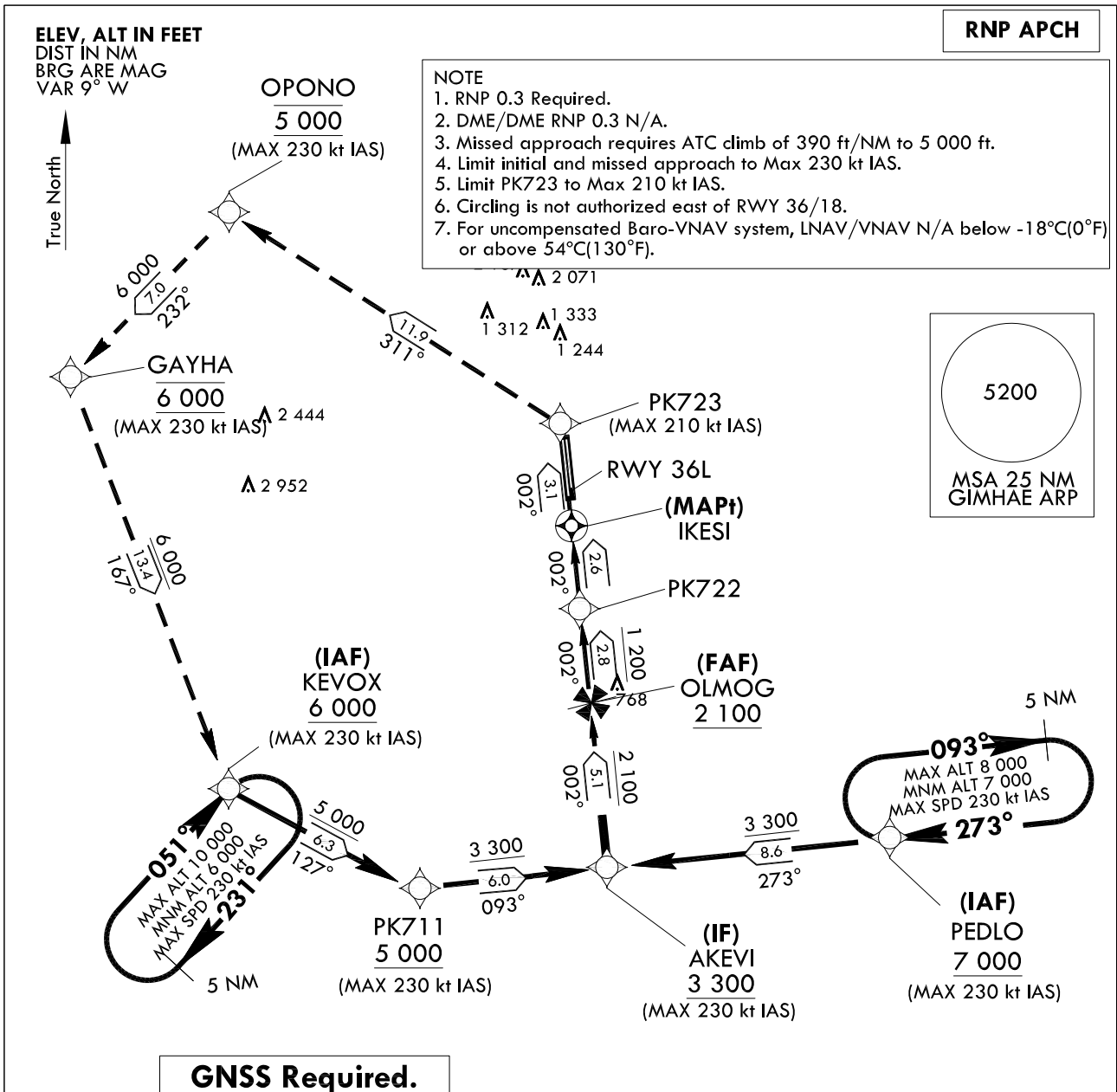
INSTRUMENT APPROACH CHART

AERODROME ELEV 13 ft
HEIGHTS RELATED TO
THR RWY 36L - ELEV 12 ft

GIMHAE APP 125.5 364.0
GIMHAE TWR 118.1 118.45
233.3 236.6

BUSAN/Gimhae Intl(RKPK)
RNP RWY 36L

Note : Approach and circle to land under U.S. TERPS.

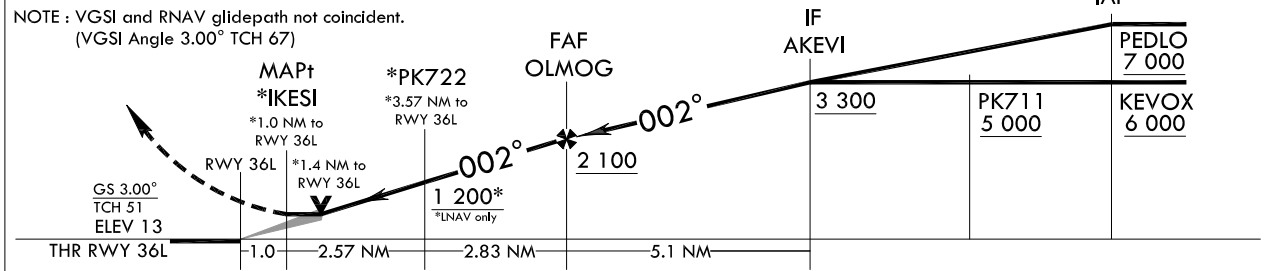


NOT TO SCALE

CAUTION - Missed Approach Climb Rate to 5 000 ft						
RWY	Knots	60	120	180	240	300
36L	V/V(fpm)	390	780	1 170	1 560	1 950

MISSED APPROACH
Climb to 6 000 ft on track 002° to PK723, then track 311° to cross OPMOG at 5 000 ft, then track 232° to cross GAYHA at 6 000 ft, then track 167° to KEVOX and hold.

TRANSITION ALT 14 000
TRANSITION LVL FL 140



CATEGORY	A	B	C	D
LNAV/VNAV	FULL	420/45	408(500-7/8)	
LNAV/VNAV	ALS INOP	420-1 3/8	408(500-1 3/8)	
LNAV	FULL	500/45	488(500-7/8)	500/55 488(500-1)
LNAV	ALS INOP	500-1 1/2	488(500-1 1/2)	
CIRCLING	580-1 1/2	567(600-1 1/2)	1 360-3 1 347(1 400-3)	1 700-3 1 687(1 700-3)

Change : Information of MAG VAR(7° W → 9° W) and instrument approach procedure for RWY 36L.

BUSAN/Gimhae Intl(RKPK)
RNP RWY 36L

AERONAUTICAL DATA TABULATION

Instrument Approach Procedure Coding Tables

Serial Number	Path Descriptor	Waypoint Identifier	Fly-over	Course/Track °M(T)	Distance (NM)	Turn direction	Altitude (ft)	Speed (kt)	Coordinates	VPA/TCH	Navigation specification	Remarks
001	-	PEDLO	-	-	-	-	+7 000	-230	34°59'23.1"N 129°08'15.3"E	-	RNP APCH	IAF
002	TF	AKEVI	-	272.59(264.07)	8.6	-	+3 300	-230	34°58'29.0"N 128°57'48.0"E	-	RNP APCH	IF

RNP RWY 36L - via KEVOX to AKEVI(IF)

Serial Number	Path Descriptor	Waypoint Identifier	Fly-over	Course/Track °M(T)	Distance (NM)	Turn direction	Altitude (ft)	Speed (kt)	Coordinates	VPA/TCH	Navigation specification	Remarks
001	-	KEVOX	-	-	-	-	+6 000	-230	35°00'51.7"N 128°43'47.2"E	-	RNP APCH	IAF
002	TF	PK711	-	126.82(118.30)	6.3	-	+5 000	-230	34°57'51.9"N 128°50'32.3"E	-	RNP APCH	SDF
003	TF	AKEVI	-	092.58(084.06)	6.0	-	+3 300	-230	34°58'29.0"N 128°57'48.0"E	-	RNP APCH	IF

RNP RWY 36L - via AKEVI(IF) to MAHF

Serial Number	Path Descriptor	Waypoint Identifier	Fly-over	Course/Track °M(T)	Distance (NM)	Turn direction	Altitude (ft)	Speed (kt)	Coordinates	VPA/TCH	Navigation specification	Remarks
001	TF	AKEVI	-	-	-	-	+3 300	-230	34°58'29.0"N 128°57'48.0"E	-	RNP APCH	IF
002	TF	OLMOG	-	002.49(353.97)	5.1	-	+2 100	-	35°03'32.1"N 128°57'09.1"E	-	RNP APCH	FAF
003	TF	PK722	-	002.48(353.96)	2.83	-	+1 200	-	35°06'21.1"N 128°56'47.3"E	-	RNP APCH	SDF
004	TF	IKESI	Y	002.48(353.96)	2.57	-	+500	-	35°08'54.9"N 128°56'27.5"E	-	RNP APCH	MAPt
005	TF	PK723	-	002.47(353.95)	3.08	-	-	-210	35°11'59.2"N 128°56'03.7"E	-	RNP APCH	CG 390 ft/NM to 5 000 ft
006	TF	OPONO	-	311.05(302.53)	11.9	-	@5 000	-230	35°18'24.2"N 128°43'46.2"E	-	RNP APCH	CG 390 ft/NM to 5 000 ft
007	TF	GAYHA	-	232.27(223.75)	7.0	-	@6 000	-230	35°13'22.4"N 128°37'54.4"E	-	RNP APCH	-
008	TF	KEVOX	-	167.38(158.86)	13.4	-	+6 000	-230	35°00'51.7"N 128°43'47.2"E	-	RNP APCH	-

HOLDING PROCEDURE

Holding Identification	Path Descriptor	Waypoint Identifier	Fly-over	Course/Track °M(T)	Distance (NM)	Turn direction	Altitude (ft)	Speed (kt)	Coordinates	VPA/TCH	Navigation specification	Remarks
RNP RWY 36L	HM	PEDLO	-	272.59(264.07)	5.0	R	-8 000 +7 000	-230	34°59'23.1"N 129°08'15.3"E	-	RNAV 1	Hold at PEDLO E Right Turn 273° Inbound 5 NM Leg.
	HM	KEVOX	-	051.05(042.53)	5.0	R	-10 000 +6 000	-230	35°00'51.7"N 128°43'47.2"E	-	RNAV 1	Hold at KEVOX SW Right Turn 051° Inbound 5 NM Leg.

Change : Information of instrument approach procedure for RWY 36L.

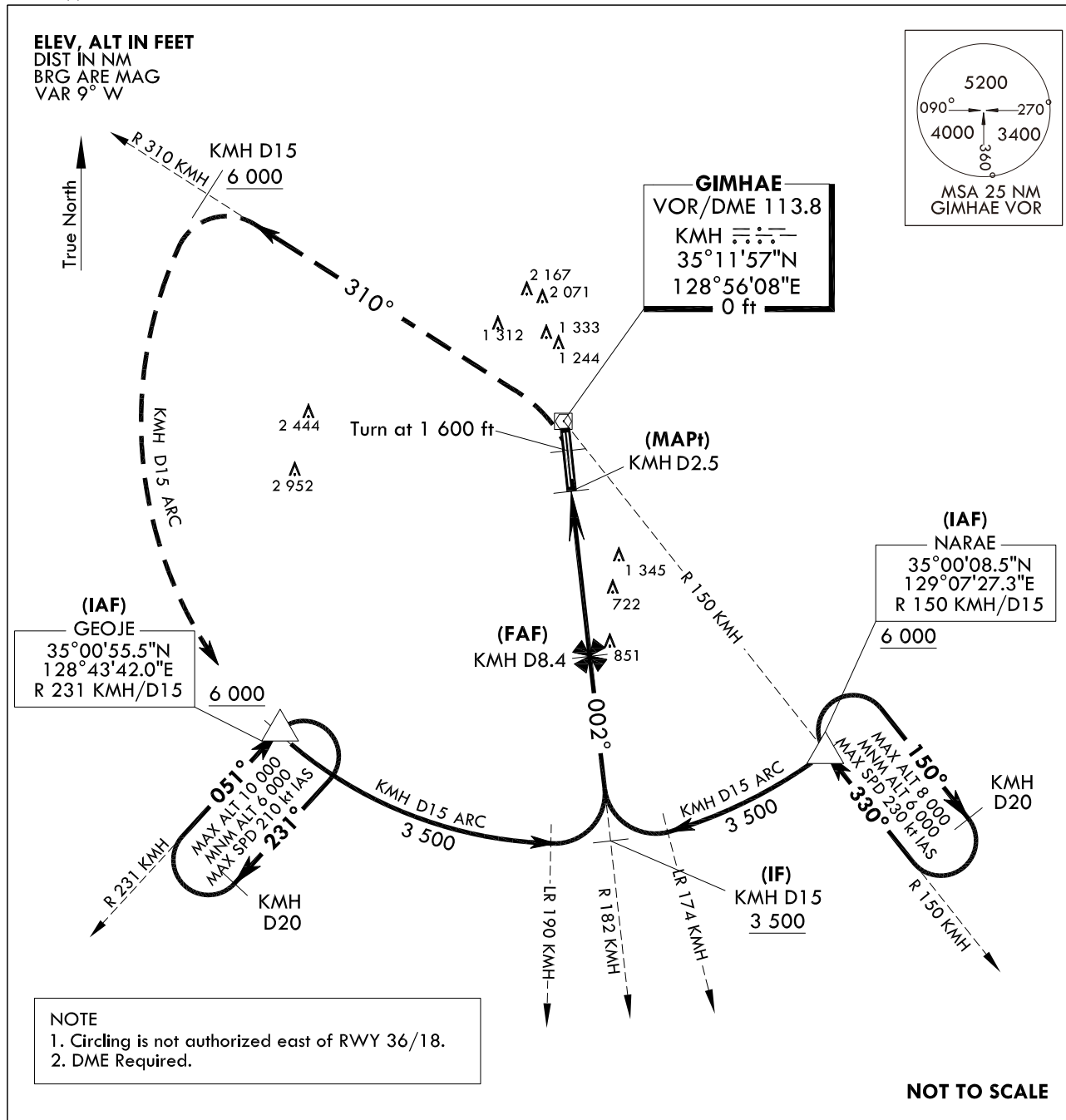
**INSTRUMENT
APPROACH
CHART**

AERODROME ELEV 13 ft
HEIGHTS RELATED TO
THR RWY 36L - ELEV 12 ft

GIMHAE APP 125.5 364.0
GIMHAE TWR 118.1 118.45
233.3 236.6

BUSAN/Gimhae Intl(RKPK)
VOR/DME
RWY 36L

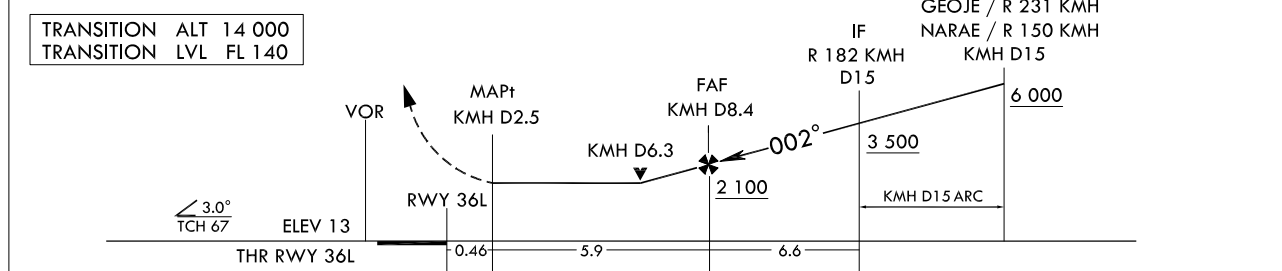
Note : Approach and circle to land under U.S. TERPS.



NOTE
1. Circling is not authorized east of RWY 36/18.
2. DME Required.

NOT TO SCALE

MISSED APPROACH
Climb to 1 600 ft then left turn climbing 6 000 ft on R 310 KMH to 15 DME, then arc KMH D15 to GEOJE and hold.



CATEGORY		A		B		C		D	
S-VOR 36L	FULL	1 460/40	1 448(1 500-3/4)	1 460/55	1 448(1 500-1)	1 460-3	1 448(1 500-3)		
	ALS INOP	1 460/60	1 448(1 500-1 1/4)	1 460-1 1/2	1 448(1 500-1 1/2)				
CIRCLING		1 460-1 1/4		1 460-1 1/2		1 460-3		1 700-3	
		1 447(1 500-1 1/4)		1 447(1 500-1 1/2)		1 447(1 500-3)		1 687(1 700-3)	

Change : Information of MAG VAR(7° W → 9° W) and instrument approach procedure for RWY 36L.

INTENTIONALLY

LEFT

BLANK

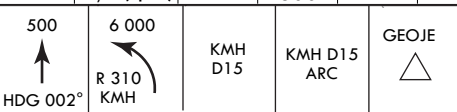
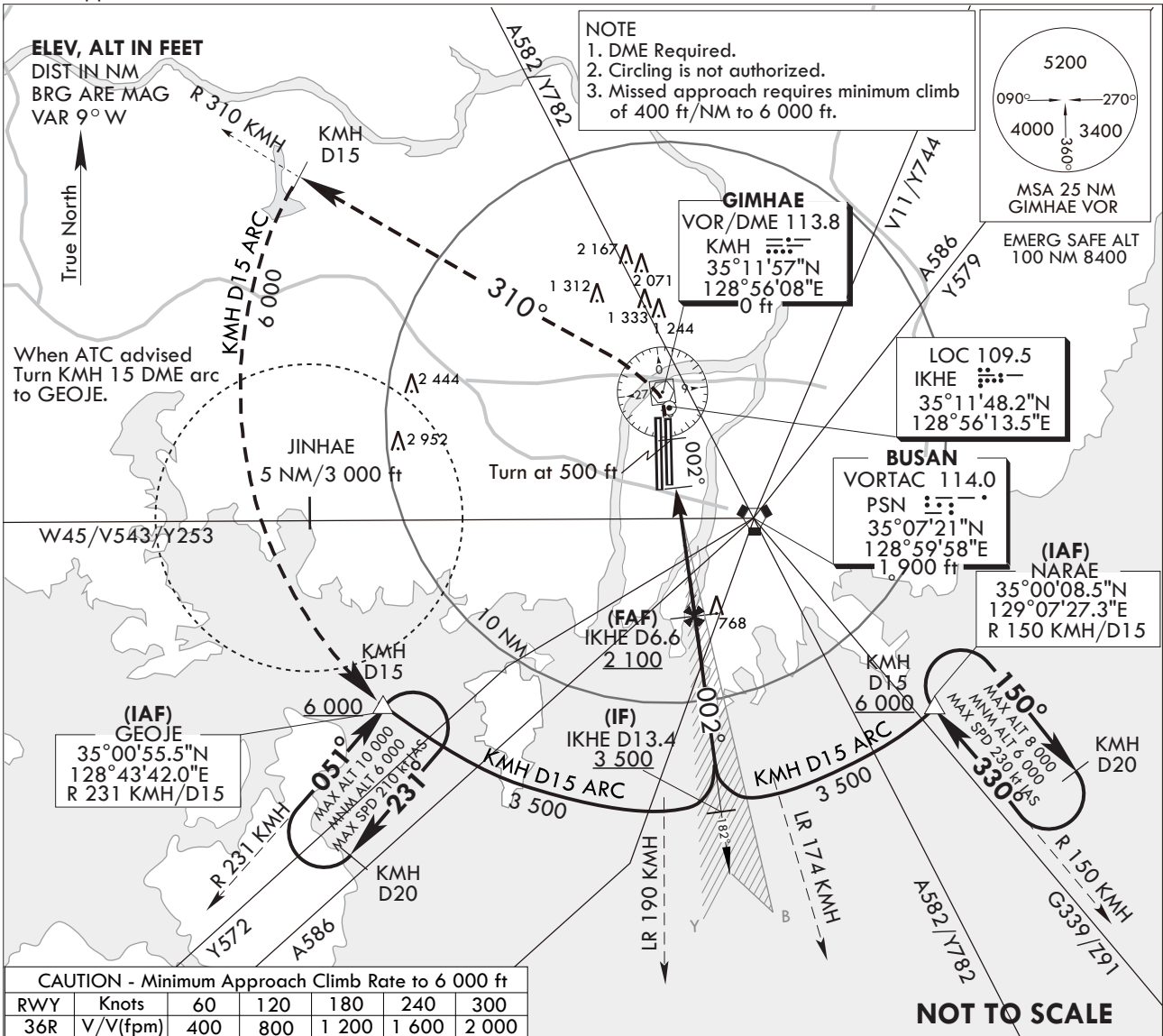
**INSTRUMENT
APPROACH
CHART**

AERODROME ELEV 13 ft
HEIGHTS RELATED TO
RWY 36R ELEV TDZ 8 ft

GIMHAE APP	125.5	364.0
GIMHAE TWR	118.1	118.450
	233.3	236.6

**BUSAN/Gimhae Intl(RKPK)
ILS Y RWY 36R**

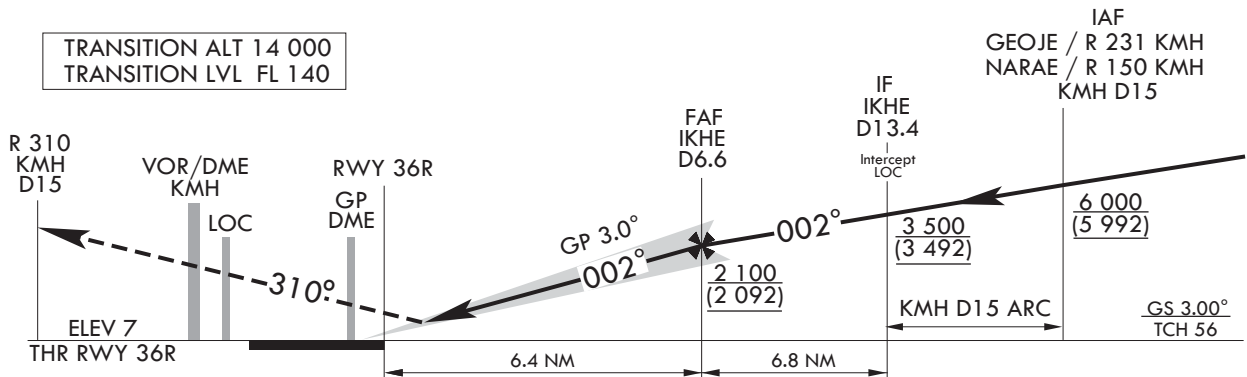
Note : Approach and circle to land under U.S. TERPS.



MISSED APPROACH

Climb to 500 ft then climbing left turn to 6 000 ft on R 310 KMH to 15 DME and at or above 6 000 ft, then arc KMH D15 to GEOJE and hold.

TRANSITION ALT 14 000
TRANSITION LVL FL 140



CATEGORY	A	B	C	D
S-ILS 36R	208/18 200 (200-1/2)		208/24* 200 (200-1/2) *Use civil only RVR 18	
ALS INOP	208/40 200 (200-3/4)			

NOTE

1. Use IKHE DME when on the localizer course.
2. VGSI and ILS glidepath not coincident. (VGSI Angle 3.00° TCH 75)

Change : Information of glide slope.

INTENTIONALLY

LEFT

BLANK

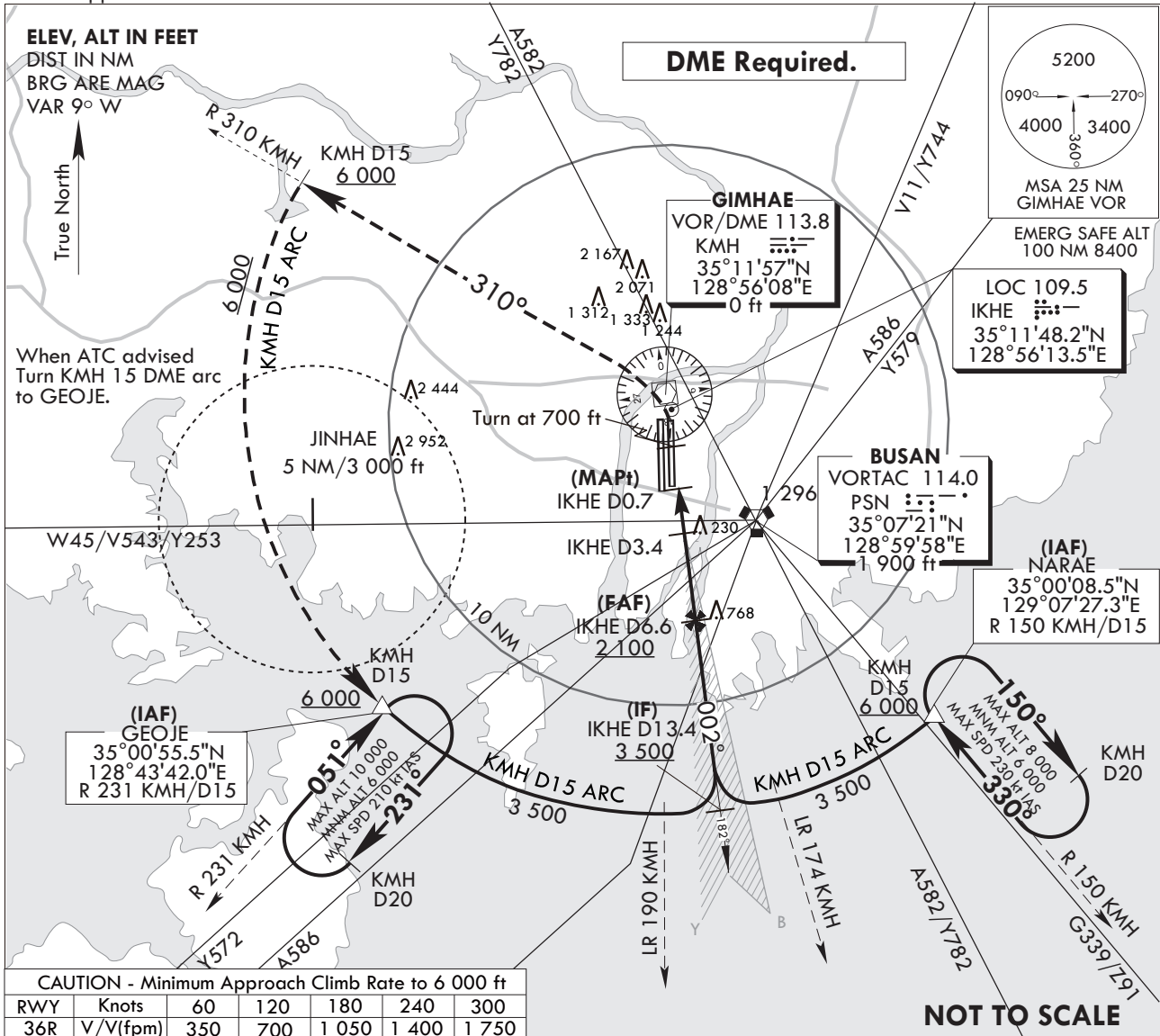
**INSTRUMENT
APPROACH
CHART**

AERODROME ELEV 13 ft
HEIGHTS RELATED TO
THR RWY 36R - ELEV 7 ft

GIMHAE APP	125.5	364.0
GIMHAE TWR	118.1	118.450
	233.3	236.6

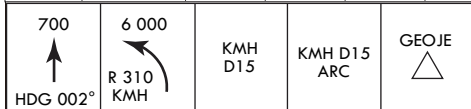
**BUSAN/Gimhae Intl(RKPK)
LOC Y RWY 36R**

Note : Approach and circle to land under U.S. TERPS.

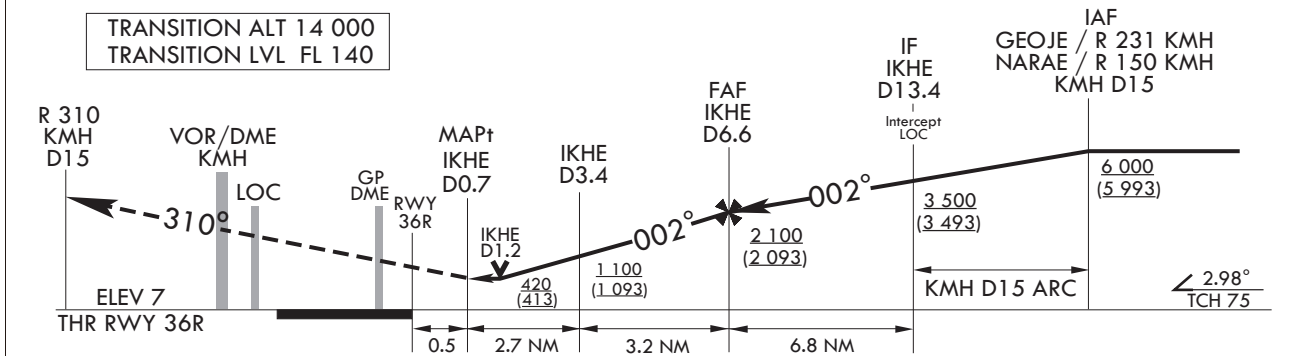


CAUTION - Minimum Approach Climb Rate to 6 000 ft

RWY	Knots	60	120	180	240	300
36R	V/V(fpm)	350	700	1 050	1 400	1 750



MISSED APPROACH
Climb to 700 ft, then climbing left turn to 6 000 ft on R 310 KMH to 15 DME cross at or above 6 000 ft, then arc KMH D15 to GEOJE and hold.



CATEGORY	A	B	C	D
S-LOC 36R	420/24	413(500-1/2)	420/40	413(500-3/4)
ALS INOP	420/55	413(500-1)	420/60	413(500-1 1/8)
CIRCLING C	520-1	580-1	1 360-3	1 700-3
	507(600-1)	567(600-1)	1 347(1 400-3)	1 687(1 700-3)

- NOTE
1. Use IKHE DME when on the localizer course.
 2. Circling not authorized East of RWY 18L/36R.
 3. Missed approach requires ATC climb of 350 ft/NM to 6 000 ft.

Change : Withdrawal of symbol for glide slope.

INTENTIONALLY

LEFT

BLANK

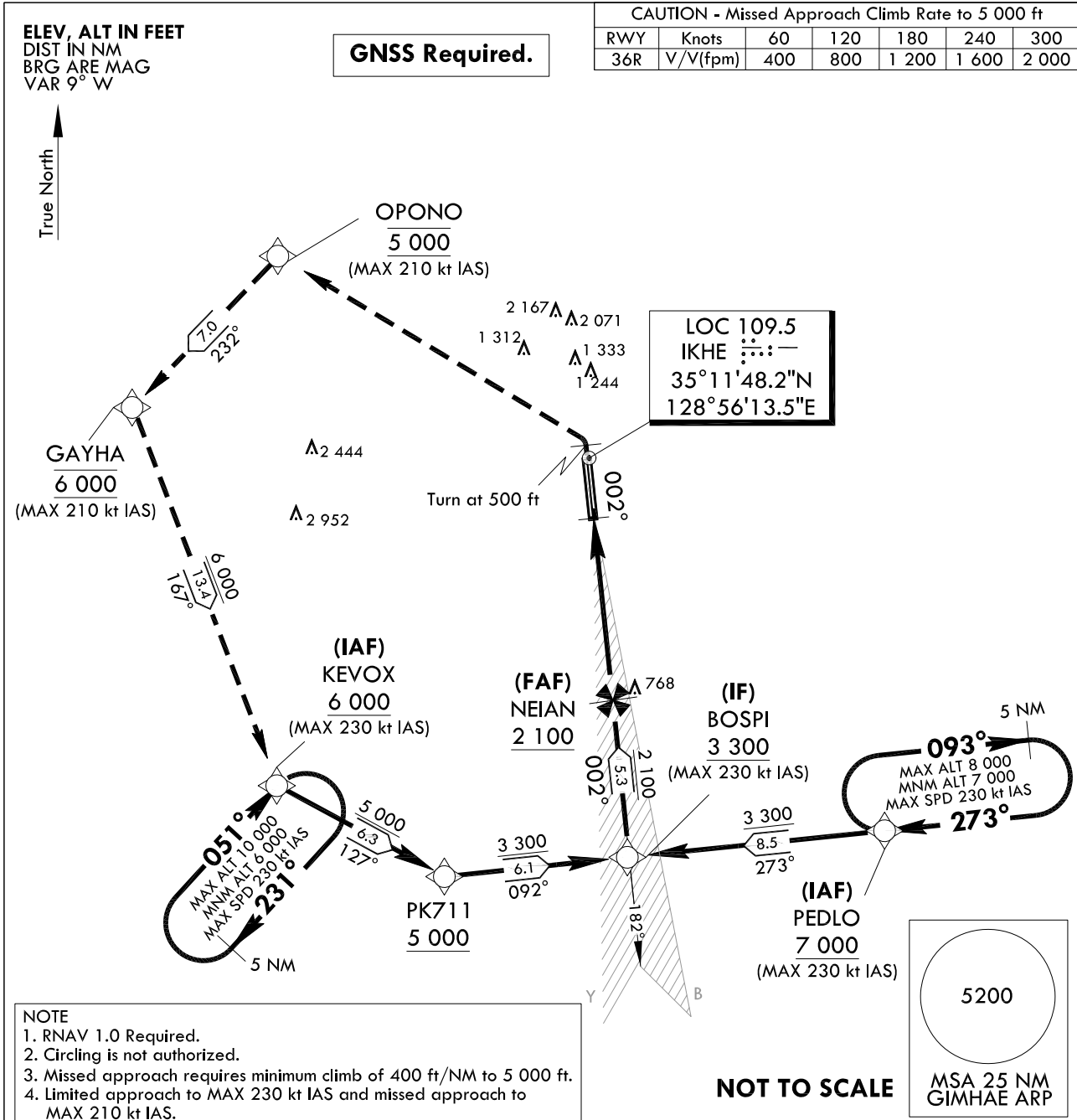
INSTRUMENT APPROACH CHART

AERODROME ELEV 13 ft
HEIGHTS RELATED TO RWY 36R ELEV TDZ 8 ft

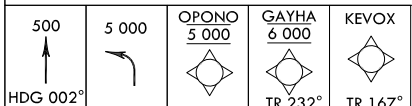
GIMHAE APP	125.5	364.0
GIMHAE TWR	118.1	118.45
	233.3	236.6

BUSAN/Gimhae Intl(RKPK)
ILS Z RWY 36R

Note : Approach and circle to land under U.S. TERPS.

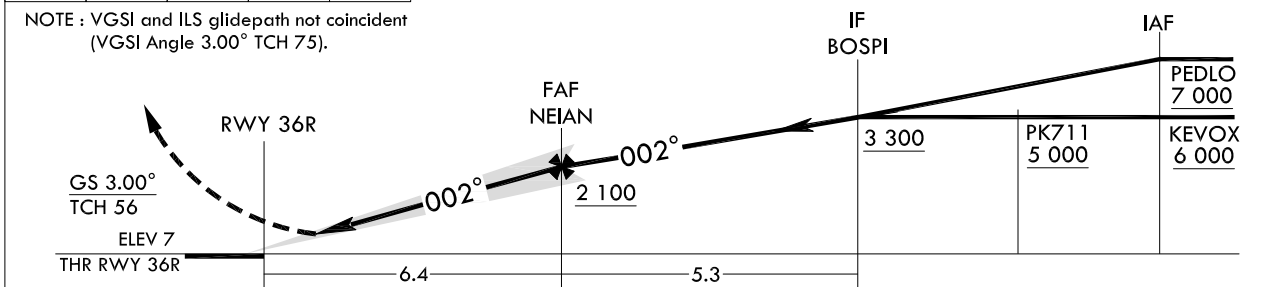


NOTE
1. RNAV 1.0 Required.
2. Circling is not authorized.
3. Missed approach requires minimum climb of 400 ft/NM to 5 000 ft.
4. Limited approach to MAX 230 kt IAS and missed approach to MAX 210 kt IAS.



MISSED APPROACH
Climb to 500 ft, then climbing left turn to 5 000 ft direct to Opono, then track 232° to Gayha and cross at 6 000 ft, then track 167° to KEVOX and hold.

TRANSITION ALT	14 000
TRANSITION LVL	FL 140



CATEGORY	A	B	C	D
S-ILS 36R	208/18 200(200-1/2)			
	When TDZ/CL LGT INOP, increase RVR to 24			
ALS INOP	208/40 200(200-3/4)			

Change : Information of glide slope.

BUSAN/Gimhae Intl(RKPK)
ILS Z RWY 36R

AERONAUTICAL DATA TABULATION

Instrument Approach Procedure Coding Tables

ILS Z RWY 36R - via PEDLO to BOSPI(IF)

Serial Number	Path Descriptor	Waypoint Identifier	Fly-over	Course/Track °M(T)	Distance (NM)	Turn direction	Altitude (ft)	Speed (kt)	Coordinates	VPA/TCH	Navigation specification	Remarks
001	-	PEDLO	-	-	-	-	+7 000	-230	34°59'23.1"N 129°08'15.3"E	-	RNAV 1	IAF
002	TF	BOSPI	-	272.75(264.23)	8.5	-	+3 300	-230	34°58'31.2"N 128°57'56.1"E	-	RNAV 1	IF

ILS Z RWY 36R - via KEYOX to BOSPI(IF)

Serial Number	Path Descriptor	Waypoint Identifier	Fly-over	Course/Track °M(T)	Distance (NM)	Turn direction	Altitude (ft)	Speed (kt)	Coordinates	VPA/TCH	Navigation specification	Remarks
001	-	KEYOX	-	-	-	-	+6 000	-230	35°00'51.7"N 128°43'47.2"E	-	RNAV 1	IAF
002	TF	PK711	-	126.82(118.30)	6.3	-	+5 000	-230	34°57'51.9"N 128°50'32.3"E	-	RNAV 1	SDF
003	TF	BOSPI	-	092.35(083.83)	6.1	-	+3 300	-230	34°58'31.2"N 128°57'56.1"E	-	RNAV 1	IF

ILS Z RWY 36R - via BOSPI(IF) to MAHF

Serial Number	Path Descriptor	Waypoint Identifier	Fly-over	Course/Track °M(T)	Distance (NM)	Turn direction	Altitude (ft)	Speed (kt)	Coordinates	VPA/TCH	Navigation specification	Remarks
001	TF	BOSPI	-	-	-	-	+3 300	-230	34°58'31.2"N 128°57'56.1"E	-	RNAV 1	IF
002	TF	NEIAN	-	002.49(353.97)	5.3	-	+2 100	-	35°03'46.6"N 128°57'15.5"E	-	-	FAF
003	-	DA	-	002.48(353.96)	-	-	+208	-	-	-	LOC	DA
004	-	RWY 36R	-	002.48(353.96)	-	-	-	-	35°10'10.10"N 128°56'26.14"E	3.0/56	LOC	-
005	VA	-	-	002.48(353.96)	-	-	+500	-	-	-	-	CG 400 ft/NM to 5 000 ft
006	DF	OPONO	-	-	-	L	@5 000	-210	35°18'24.2"N 128°43'46.2"E	-	RNAV 1	CG 400 ft/NM to 5 000 ft
007	TF	GAYHA	-	232.27(223.75)	7.0	-	@6 000	-210	35°13'22.4"N 128°37'54.4"E	-	RNAV 1	-
008	TF	KEYOX	-	167.38(158.86)	13.4	-	+6 000	-230	35°00'51.7"N 128°43'47.2"E	-	RNAV 1	-

HOLDING PROCEDURE

Holding Identification	Path Descriptor	Waypoint Identifier	Fly-over	Course/Track °M(T)	Distance (NM)	Turn direction	Altitude (ft)	Speed (kt)	Coordinates	VPA/TCH	Navigation specification	Remarks
ILS Z RWY 36R	HM	PEDLO	-	272.59(264.07)	5.0	R	-8 000 +7 000	-230	34°59'23.1"N 129°08'15.3"E	-	RNAV 1	Hold at PEDLO E Right Turn 273° Inbound 5 NM Leg.
	HM	KEYOX	-	051.05(042.53)	5.0	R	-10 000 +6 000	-230	35°00'51.7"N 128°43'47.2"E	-	RNAV 1	Hold at KEYOX SW Right Turn 051° Inbound 5 NM Leg.

**INSTRUMENT
APPROACH
CHART**

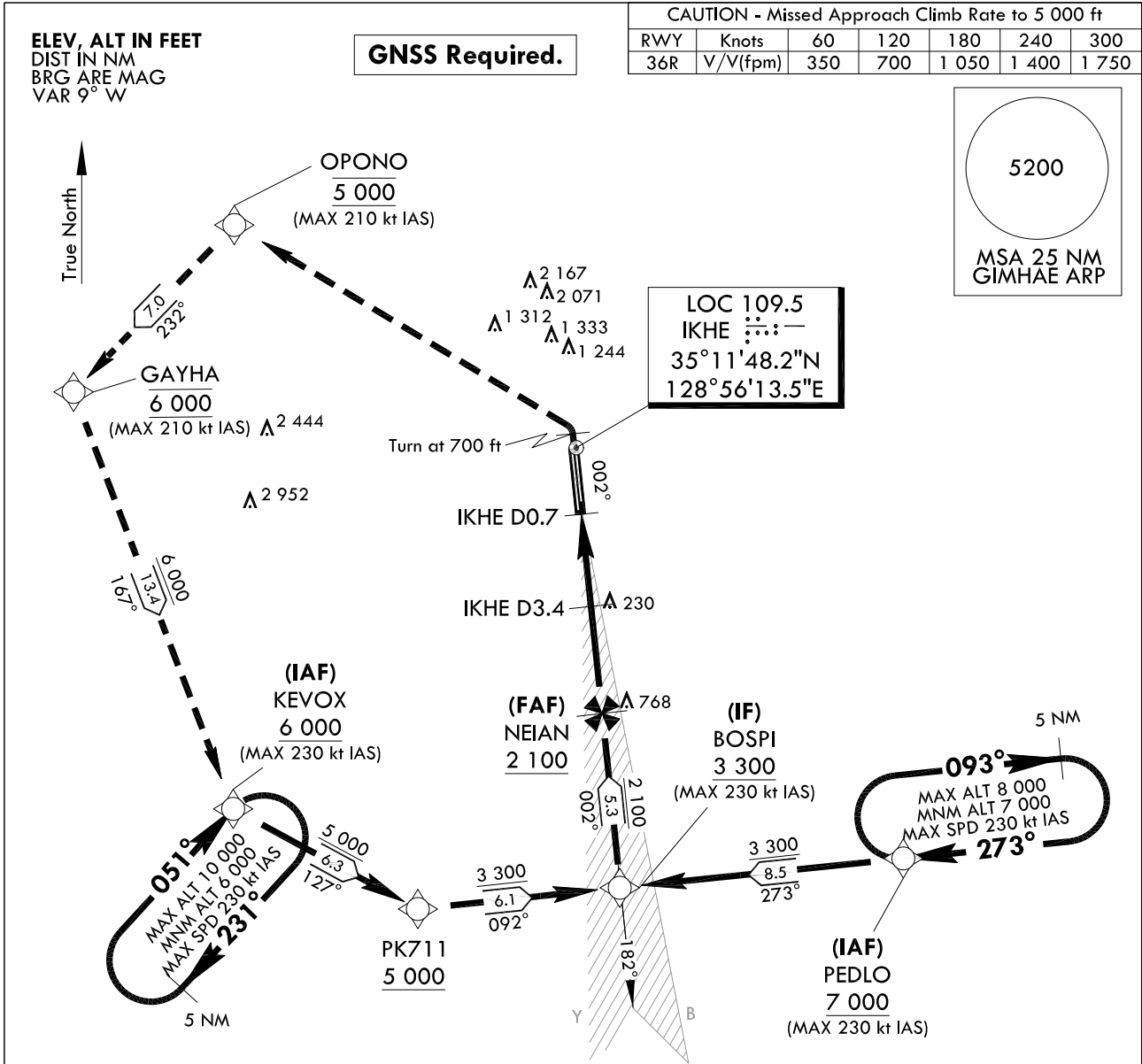
AERODROME ELEV 13 ft
HEIGHTS RELATED TO
THR RWY 36R - ELEV 7 ft

GIMHAE APP 125.5 364.0
GIMHAE TWR 118.1 118.45
233.3 236.6

BUSAN/Gimhae Intl(RKPK)
LOC Z RWY 36R

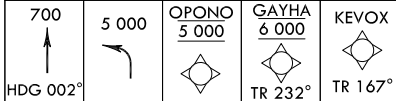
Note : Approach and circle to land under U.S. TERPS.

CAUTION - Missed Approach Climb Rate to 5 000 ft						
RWY	Knots	60	120	180	240	300
36R	V/V(fpm)	350	700	1 050	1 400	1 750

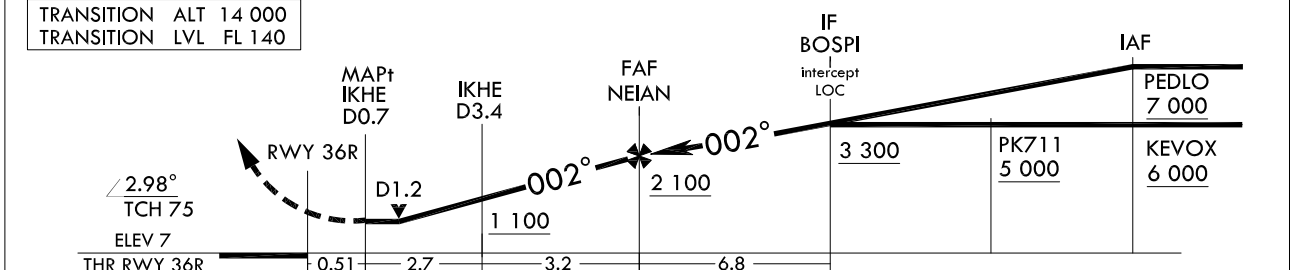


NOTE
1. RNAV 1.0 Required.
2. Circling is not authorized east of RWY 36/18.
3. Missed approach requires ATC climb of 350 ft/NM to 5 000 ft.
4. Limited approach to MAX 230 kt IAS and missed approach to MAX 210 kt IAS.

NOT TO SCALE



MISSED APPROACH
Climb to 700 ft, then climbing left turn to 5 000 ft direct to Opono, then track 232° to GAYHA and cross at 6 000 ft, then track 167° to KEVOX and hold.
NOTE : Use IKHE DME when on the localizer course.



S-LOC 36R	FULL	420/24	413(500-1/2)	420/40	413(500-3/4)
	ALS INOP	420/55	413(500-1)	420/60	413(500-1 1/8)
CIRCLING		520-1	580-1	1 360-3	1 700-3
		507(600-1)	567(600-1)	1 347(1 400-3)	1 687(1 700-3)

Change : Withdrawal of symbol for glide slope.

BUSAN/Gimhae Intl(RKPK)
LOC Z RWY 36R

AERONAUTICAL DATA TABULATION

Instrument Approach Procedure Coding Tables

LOC Z RWY 36R - via PEDLO to BOSPI(IF)

Serial Number	Path Descriptor	Waypoint Identifier	Fly-over	Course/Track °M(°T)	Distance (NM)	Turn direction	Altitude (ft)	Speed (kt)	Coordinates	VPA/TCH	Navigation specification	Remarks
001	-	PEDLO	-	-	-	-	+7 000	-230	34°59'23.1"N 129°08'15.3"E	-	RNAV 1	IAF
002	TF	BOSPI	-	272.75(264.23)	8.5	-	+3 300	-230	34°58'31.2"N 128°57'56.1"E	-	RNAV 1	IF

LOC Z RWY 36R - via KEVOX to BOSPI(IF)

Serial Number	Path Descriptor	Waypoint Identifier	Fly-over	Course/Track °M(°T)	Distance (NM)	Turn direction	Altitude (ft)	Speed (kt)	Coordinates	VPA/TCH	Navigation specification	Remarks
001	-	KEVOX	-	-	-	-	+6 000	-230	35°00'51.7"N 128°43'47.2"E	-	RNAV 1	IAF
002	TF	PK711	-	126.82(118.30)	6.3	-	+5 000	-230	34°57'51.9"N 128°50'32.3"E	-	RNAV 1	SDF
003	TF	BOSPI	-	092.35(083.83)	6.1	-	+3 300	-230	34°58'31.2"N 128°57'56.1"E	-	RNAV 1	IF

LOC Z RWY 36R - via BOSPI(IF) to MAHF

Serial Number	Path Descriptor	Waypoint Identifier	Fly-over	Course/Track °M(°T)	Distance (NM)	Turn direction	Altitude (ft)	Speed (kt)	Coordinates	VPA/TCH	Navigation specification	Remarks
001	TF	BOSPI	-	-	-	-	+3 300	-230	34°58'31.2"N 128°57'56.1"E	-	RNAV 1	IF
002	TF	NEIAN	-	002.49(353.97)	5.3	-	+2 100	-	35°03'46.6"N 128°57'15.5"E	-	LOC	FAF
003	-	IKHE D3.4	-	002.48(353.96)	3.2	-	+1 100	-	35°06'57.8"N 128°56'50.9"E	-	LOC	SDF
004	-	IKHE D0.7	-	002.48(353.96)	2.7	-	+420	-	35°09'39.4"N 128°56'30.1"E	-	LOC	MAPt
005	-	RWY 36R	-	002.48(353.96)	0.51	-	-	-	35°10'10.10"N 128°56'26.14"E	2.98/75	LOC	-
006	VA	-	-	002.48(353.96)	-	-	+700	-	-	-	-	CG 350 ft/NM to 5 000 ft
007	DF	OPONO	-	-	-	L	@5 000	-210	35°18'24.2"N 128°43'46.2"E	-	RNAV 1	CG 350 ft/NM to 5 000 ft
008	TF	GAYHA	-	232.27(223.75)	7.0	-	@6 000	-210	35°13'22.4"N 128°37'54.4"E	-	RNAV 1	-
009	TF	KEVOX	-	167.38(158.86)	13.4	-	+6 000	-230	35°00'51.7"N 128°43'47.2"E	-	RNAV 1	-

HOLDING PROCEDURE

Holding Identification	Path Descriptor	Waypoint Identifier	Fly-over	Course/Track °M(°T)	Distance (NM)	Turn direction	Altitude (ft)	Speed (kt)	Coordinates	VPA/TCH	Navigation specification	Remarks
LOC Z RWY 36R	HM	PEDLO	-	272.59(264.07)	5.0	R	-8 000 +7 000	-230	34°59'23.1"N 129°08'15.3"E	-	RNAV 1	Hold at PEDLO E Right Turn 273° Inbound 5 NM Leg.
	HM	KEVOX	-	051.05(042.53)	5.0	R	-10 000 +6 000	-230	35°00'51.7"N 128°43'47.2"E	-	RNAV 1	Hold at KEVOX SW Right Turn 051° Inbound 5 NM Leg.

INSTRUMENT APPROACH CHART

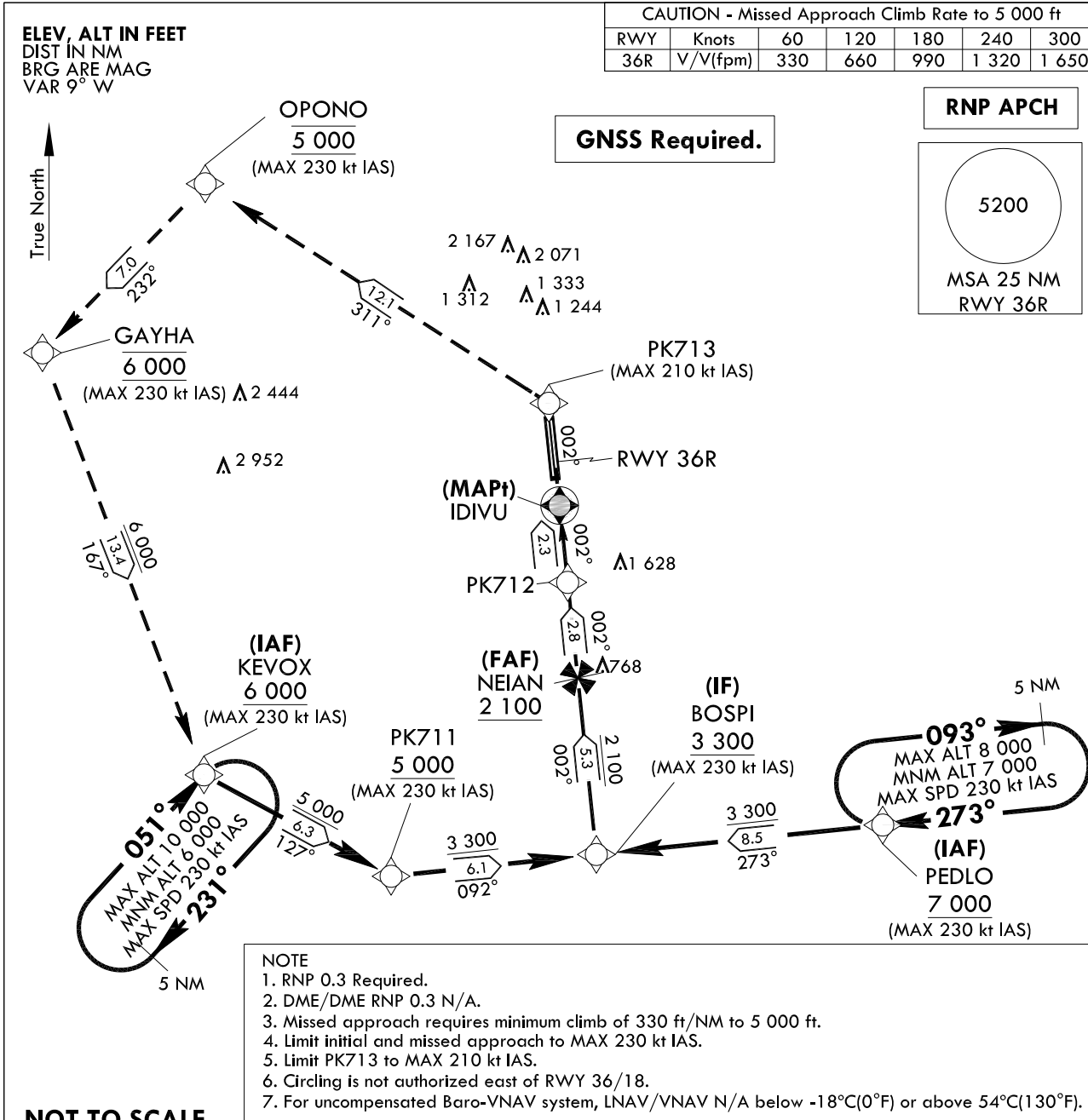
AERODROME ELEV 13 ft
HEIGHTS RELATED TO
THR RWY 36R - ELEV 7 ft

GIMHAE APP 125.5 364.0
GIMHAE TWR 118.1 118.45
233.3 236.6

BUSAN/Gimhae Intl(RKPK)
RNP RWY 36R

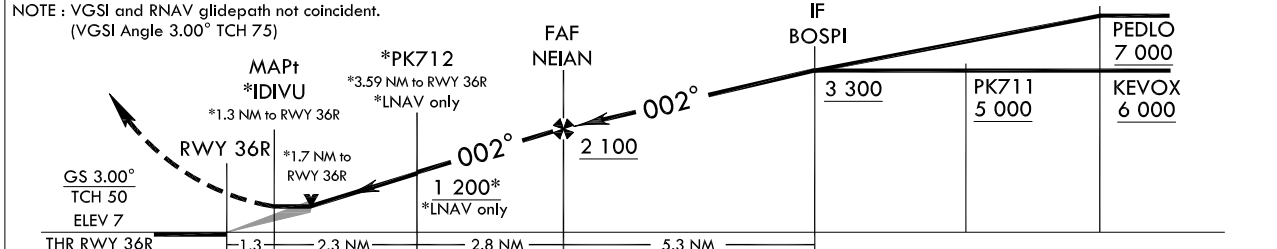
Note : Approach and circle to land under U.S. TERPS.

CAUTION - Missed Approach Climb Rate to 5 000 ft						
RWY	Knots	60	120	180	240	300
36R	V/V(fpm)	330	660	990	1 320	1 650



MISSED APPROACH
Climb to 6 000 ft on track 002° to PK713, then track 311° to cross Opono at 5 000 ft, then track 232° to cross Gayha at 6 000 ft, then track 167° to KEVOX and hold.

TRANSITION ALT 14 000
TRANSITION LVL FL 140



CATEGORY		A	B	C	D
RNAV/VNAV	FULL		420/55	413(500-1)	
	ALS INOP		420/60	413(500-1 1/4)	
LNAV	FULL		600-1 1/2	593(600-1 1/2)	
	ALS INOP		600-1 7/8	593(600-1 7/8)	
CIRCLING		600-1 7/8 587(600-1 7/8)	1 360-3	1 347(1 400-3)	1 700-3 1 687(1 700-3)

Change : Information of MAG VAR(7° W → 9° W) and instrument approach procedure for RWY 36R.

BUSAN/Gimhae Intl(RKPK)
RNP RWY 36R

AERONAUTICAL DATA TABULATION

Instrument Approach Procedure Coding Tables

Serial Number	Path Descriptor	Waypoint Identifier	Fly-over	Course/Track °M(T)	Distance (NM)	Turn direction	Altitude (ft)	Speed (kt)	Coordinates	VPA/TCH	Navigation specification	Remarks
001	-	PEDLO	-	-	-	-	+7 000	-230	34°59'23.1"N 129°08'15.3"E	-	RNP APCH	IAF
002	TF	BOSPI	-	272.75(264.23)	8.5	-	+3 300	-230	34°58'31.2"N 128°57'56.1"E	-	RNP APCH	IF

Serial Number	Path Descriptor	Waypoint Identifier	Fly-over	Course/Track °M(T)	Distance (NM)	Turn direction	Altitude (ft)	Speed (kt)	Coordinates	VPA/TCH	Navigation specification	Remarks
001	-	KEVOX	-	-	-	-	+6 000	-230	35°00'51.7"N 128°43'47.2"E	-	RNP APCH	IAF
002	TF	PK711	-	126.82(118.30)	6.3	-	+5 000	-230	34°57'51.9"N 128°50'32.3"E	-	RNP APCH	SDF
003	TF	BOSPI	-	092.35(083.83)	6.1	-	+3 300	-230	34°58'31.2"N 128°57'56.1"E	-	RNP APCH	IF

Serial Number	Path Descriptor	Waypoint Identifier	Fly-over	Course/Track °M(T)	Distance (NM)	Turn direction	Altitude (ft)	Speed (kt)	Coordinates	VPA/TCH	Navigation specification	Remarks
001	TF	BOSPI	-	-	-	-	+3 300	-230	34°58'31.2"N 128°57'56.1"E	-	RNP APCH	IF
002	TF	NEIAN	-	002.49(353.97)	5.3	-	+2 100	-	35°03'46.6"N 128°57'15.5"E	-	RNP APCH	FAF
003	TF	PK712	-	002.48(353.96)	2.8	-	+1 200	-	35°06'35.6"N 128°56'53.8"E	-	RNP APCH	SDF
004	TF	IDIVU	Y	002.48(353.96)	2.3	-	+600	-	35°08'52.4"N 128°56'36.2"E	-	RNP APCH	MAP1
005	TF	PK713	-	002.51(353.99)	3.1	-	-	-210	35°11'54.5"N 128°56'12.8"E	-	RNP APCH	CG 330 ft/NM to 5 000 ft
006	TF	OPONO	-	311.05(302.53)	12.1	-	@5 000	-230	35°18'24.2"N 128°43'46.2"E	-	RNP APCH	CG 330 ft/NM to 5 000 ft
007	TF	GAYHA	-	232.27(223.75)	7.0	-	@6 000	-230	35°13'22.4"N 128°37'54.4"E	-	RNP APCH	-
008	TF	KEVOX	-	167.38(158.86)	13.4	-	+6 000	-230	35°00'51.7"N 128°43'47.2"E	-	RNP APCH	-

Holding Identification	Path Descriptor	Waypoint Identifier	Fly-over	Course/Track °M(T)	Distance (NM)	Turn direction	Altitude (ft)	Speed (kt)	Coordinates	VPA/TCH	Navigation specification	Remarks
RNP RWY 36R	HIM	PEDLO	-	272.59(264.07)	5.0	R	-8 000 +7 000	-230	34°59'23.1"N 129°08'15.3"E	-	RNAV 1	Hold at PEDLO E Right Turn 273° Inbound 5 NM Leg.
	HIM	KEVOX	-	051.05(042.53)	5.0	R	-10 000 +6 000	-230	35°00'51.7"N 128°43'47.2"E	-	RNAV 1	Hold at KEVOX SW Right Turn 051° Inbound 5 NM Leg.

Change : Information of instrument approach procedure for RWY 36R.

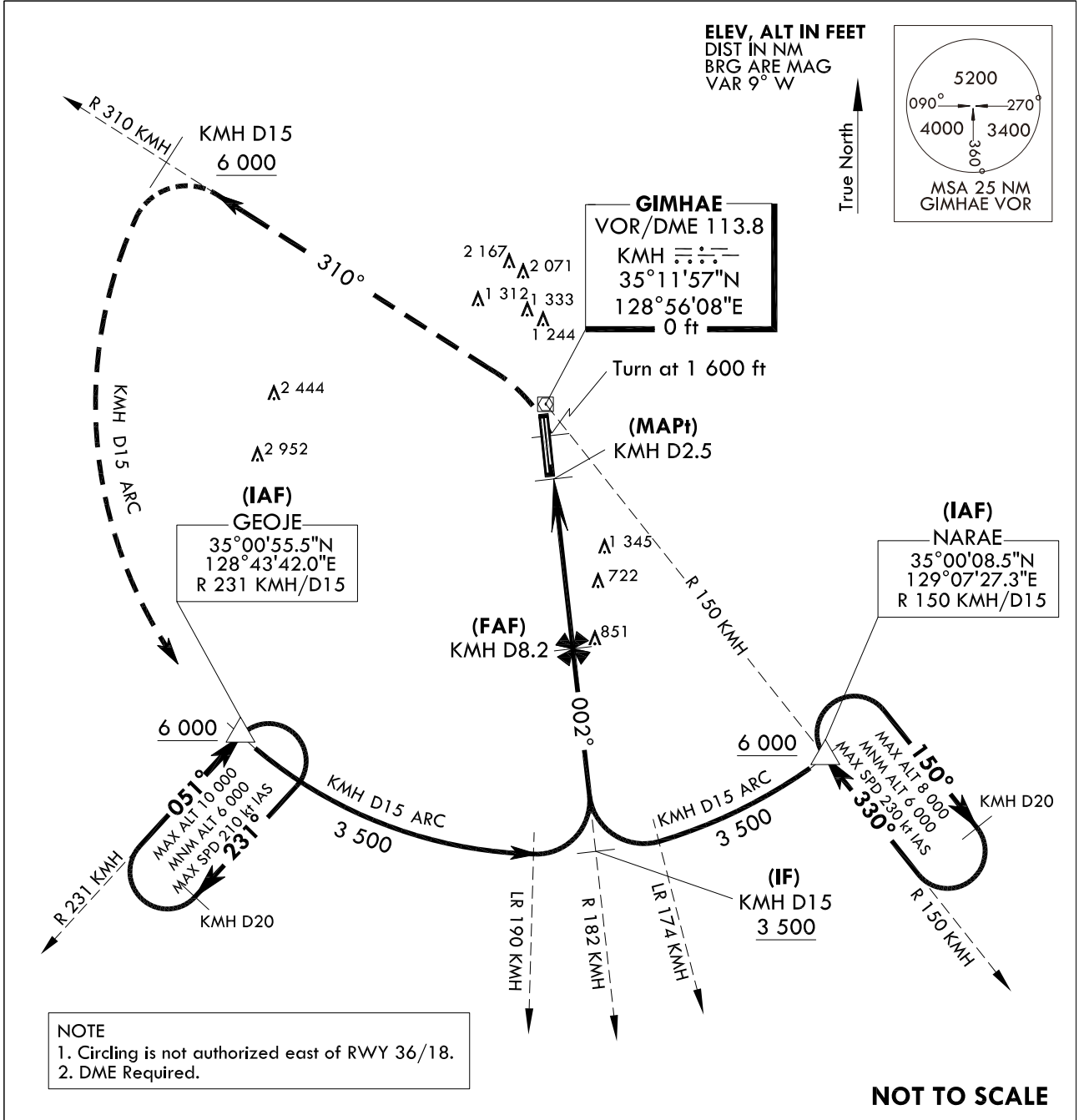
**INSTRUMENT
APPROACH
CHART**

AERODROME ELEV 13 ft
HEIGHTS RELATED TO
THR RWY 36R - ELEV 7 ft

GIMHAE APP	125.5	364.0
GIMHAE TWR	118.1	118.45
	233.3	236.6

BUSAN/Gimhae Intl(RKPK)
VOR/DME
RWY 36R

Note : Approach and circle to land under U.S. TERPS.



NOTE
1. Circling is not authorized east of RWY 36/18.
2. DME Required.

NOT TO SCALE

1 600 ↑ HGD 002°	6 000 R 310 KMH	KMH D15	KMH D15 ARC	GEOJE △	MISSED APPROACH Climb to 1 600 ft then left turn climbing 6 000 ft on R 310 KMH to 15 DME, then arc KMH D15 to GEOJE and hold.
------------------------	-----------------------	------------	----------------	------------	--

TRANSITION ALT 14 000	TRANSITION LVL FL 140				
-----------------------	-----------------------	--	--	--	--

	VOR	MAPt KMH D2.5	FAF KMH D8.2	IF R 182 KMH D15	IAF GEOJE / R 231 KMH NARAE / R 150 KMH KMH D15
			KMH D6.1	002°	6 000
				3 500	
				KMH D15 ARC	

	THR RWY 36R	0.71	5.7	6.8	
--	-------------	------	-----	-----	--

CATEGORY		A	B	C	D
S-VOR 36R	FULL	1 460/40 1 453(1 500 - 3/4)	1 460/55 1 453(1 500 - 1)	1 460 - 3	1 453(1 500 - 3)
	ALS INOP	1 460/60 1 453(1 500 - 1 1/4)	1 460 - 1 1/2 1 453(1 500 - 1 1/2)		
		1 460 - 1 1/4 1 447(1 500 - 1 1/4)	1 460 - 1 1/2 1 447(1 500 - 1 1/2)	1 460 - 3 1 447(1 500 - 3)	1 700 - 3 1 687(1 700 - 3)
CIRCLING					

Change : Information of MAG VAR(7° W → 9° W) and instrument approach procedure for RWY 36R.

INTENTIONALLY

LEFT

BLANK

**INSTRUMENT
APPROACH
CHART**

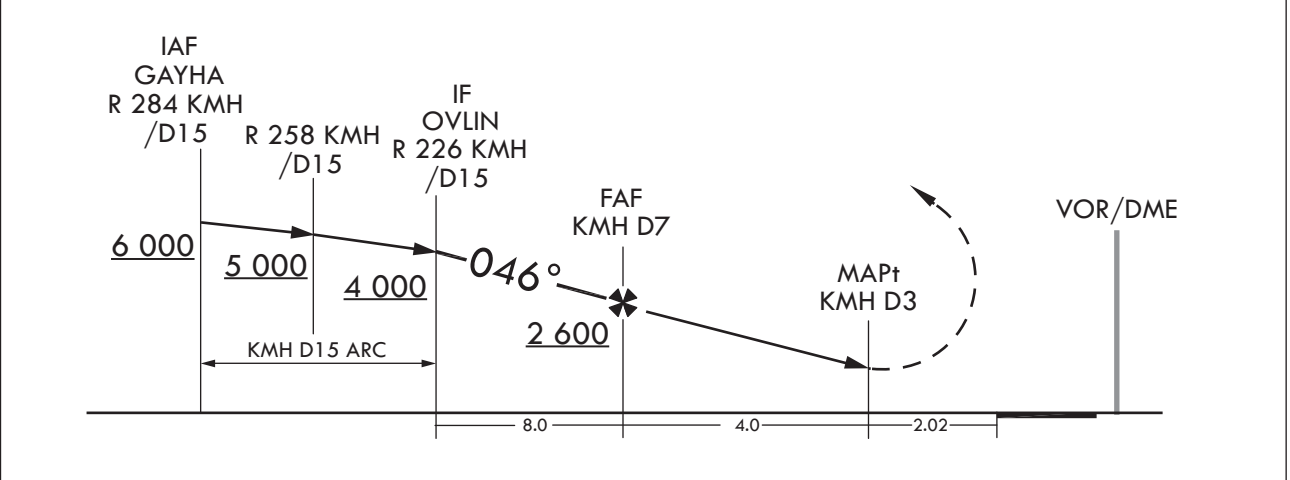
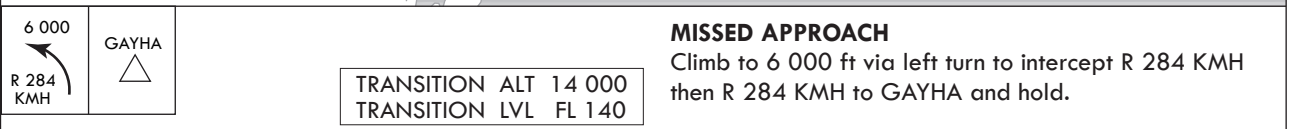
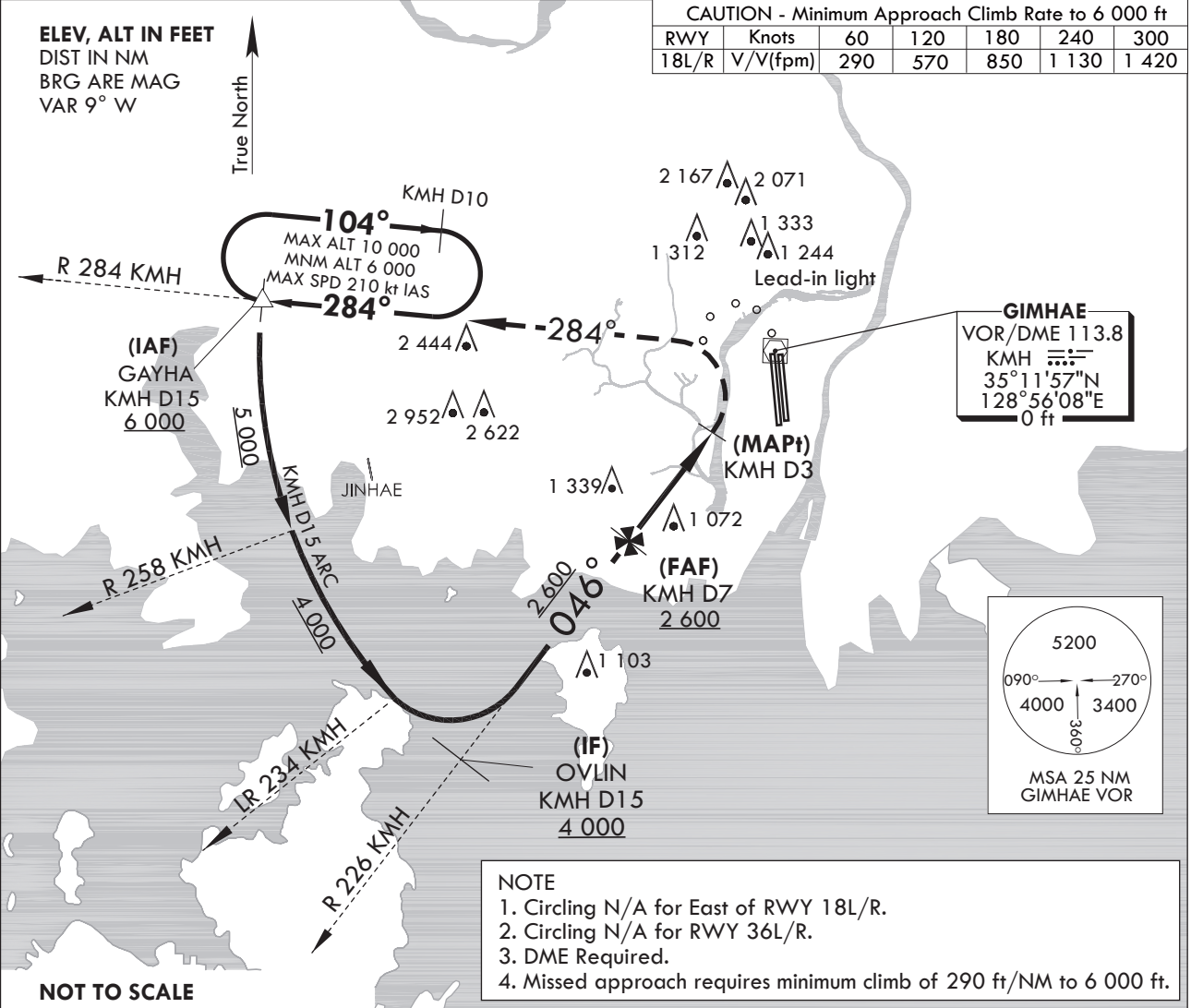
AERODROME ELEV 13 ft
HEIGHTS RELATED TO
THR RWY 18L - ELEV 8 ft
THR RWY 18R - ELEV 13 ft

GIMHAE APP	125.5	364.0
GIMHAE TWR	118.1	233.3
	118.450	236.6

BUSAN/Gimhae Intl(RKPK)
VOR/DME-A
RWY 18L/R

Note : Approach and Circle to land under U.S TERPS.

CAUTION - Minimum Approach Climb Rate to 6 000 ft						
RWY	Knots	60	120	180	240	300
18L/R	V/V(fpm)	290	570	850	1 130	1 420



CATEGORY	A	B	C	D
CIRCLING		1 700 - 3	1 687(1 700 - 3)	

Change : Information of MAG VAR(7° W → 9° W) and instrument approach procedure for RWY 18L/R.

INTENTIONALLY

LEFT

BLANK

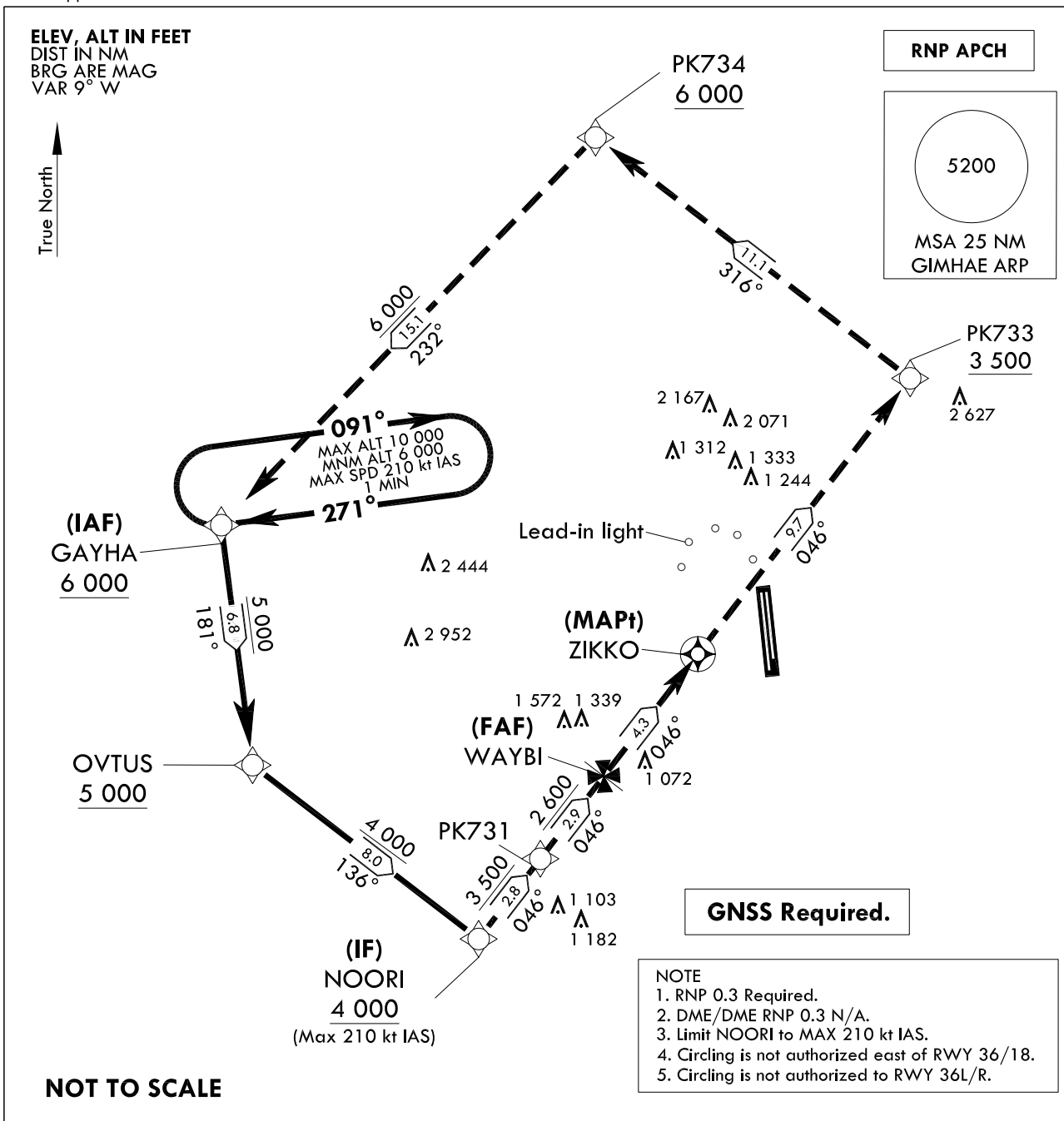
**INSTRUMENT
APPROACH
CHART**

AERODROME ELEV 13 ft

GIMHAE APP 125.5 364.0
GIMHAE TWR 118.1 118.45
233.3 236.6

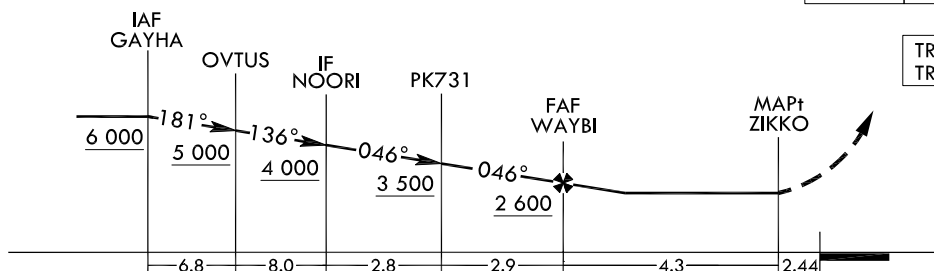
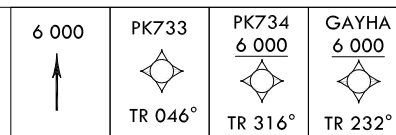
**BUSAN/Gimhae Intl(RKPK)
RNP B RWY 18L/R**

Note : Approach and circle to land under U.S. TERPS.



MISSED APPROACH

Climb to 6 000 ft via track 046° to cross PK733 at or above 3 500 ft, then track 316° to cross PK734 at or above 6 000 ft, then track 232° to cross GAYHA at or above 6 000 ft and hold.



TRANSITION ALT 14 000
TRANSITION LVL FL 140

CATEGORY	A	B	C	D
LNAV/VNAV			N/A	
LNAV			N/A	
CIRCLING		1 700-3	1 687(1 700-3)	

Change : Information of MAG VAR(7° W → 9° W) and instrument approach procedure for RWY 18L/R.

BUSAN/Gimhae Intl(RKPK)
RNP B RWY 18L/R

AERONAUTICAL DATA TABULATION

Instrument Approach Procedure Coding Tables

RNP B RWY 18L/R

Serial Number	Path Descriptor	Waypoint Identifier	Fly-over	Course/Track °M(°T)	Distance (NM)	Turn direction	Altitude (ft)	Speed (kt)	Coordinates	VPA/TCH	Navigation specification	Remarks
001	TF	GAYHA	-	-	-	-	+6 000	-	35°13'22.4"N 128°37'54.4"E	-	RNP APCH	IAF
002	TF	OVTUS	-	180.88(172.36)	6.75	-	+5 000	-	35°06'40.3"N 128°39'00.0"E	-	RNP APCH	-
003	TF	NOORI	-	135.89(127.37)	7.95	-	+4 000	-210	35°01'50.0"N 128°46'41.8"E	-	RNP APCH	IF
004	TF	PK731	-	045.96(037.44)	2.82	-	+3 500	-	35°04'04.7"N 128°48'47.2"E	-	RNP APCH	-
005	TF	WAYBI	-	045.98(037.46)	2.9	-	+2 600	-	35°06'23.0"N 128°50'56.2"E	-	RNP APCH	FAF
006	TF	ZIKKO	Y	046.00(037.48)	4.3	-	+1 700	-	35°09'48.1"N 128°54'07.8"E	-	RNP APCH	MAPt
007	TF	PK733	-	046.03(037.51)	9.7	-	+3 500	-	35°17'30.5"N 129°01'20.9"E	-	RNP APCH	-
008	TF	PK734	-	316.10(307.58)	11.07	-	+6 000	-	35°24'15.6"N 128°50'37.2"E	-	RNP APCH	-
009	TF	GAYHA	-	232.33(223.81)	15.05	-	+6 000	-	35°13'22.4"N 128°37'54.4"E	-	RNP APCH	-
010	HM	GAYHA	-	271.05(262.53)	-	R	-10 000 +6 000	-210	35°13'22.4"N 128°37'54.4"E	-	-	1 min (Inbound timing)

Change : Information of instrument approach procedure for RWY 18L/R.